



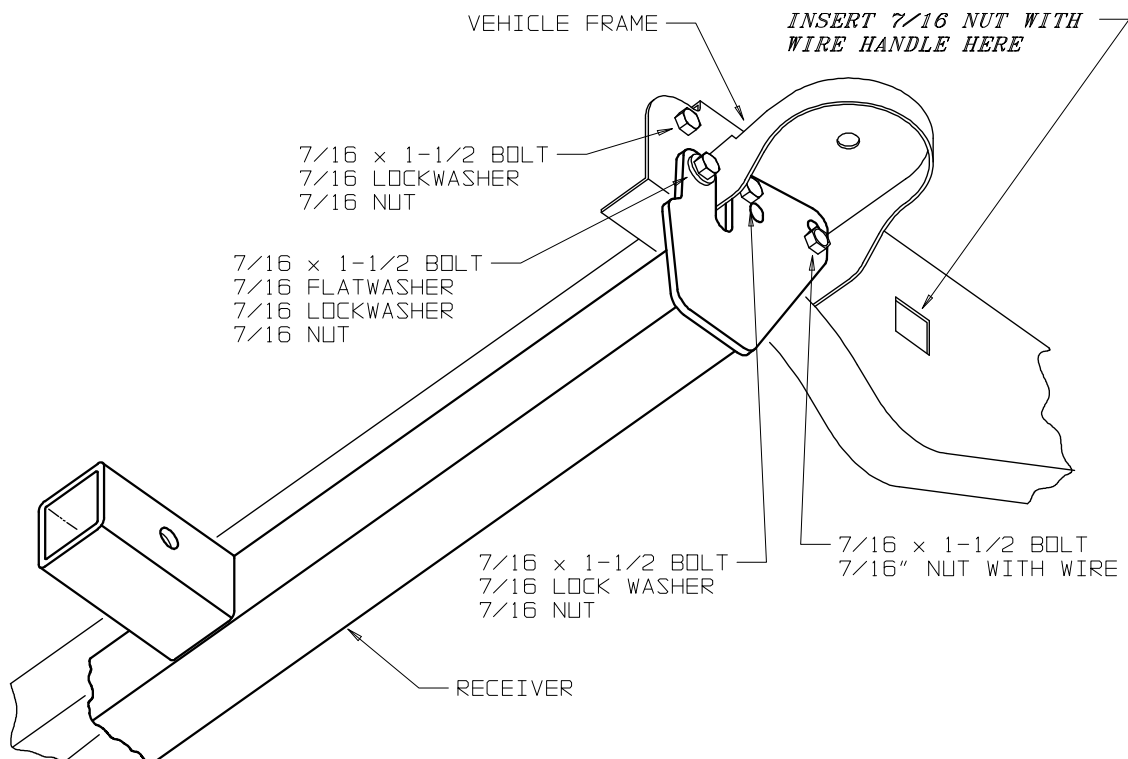
# INSTALLATION INSTRUCTIONS

## RECEIVER KIT for Dodge Full-Size Trucks Part Number 31727

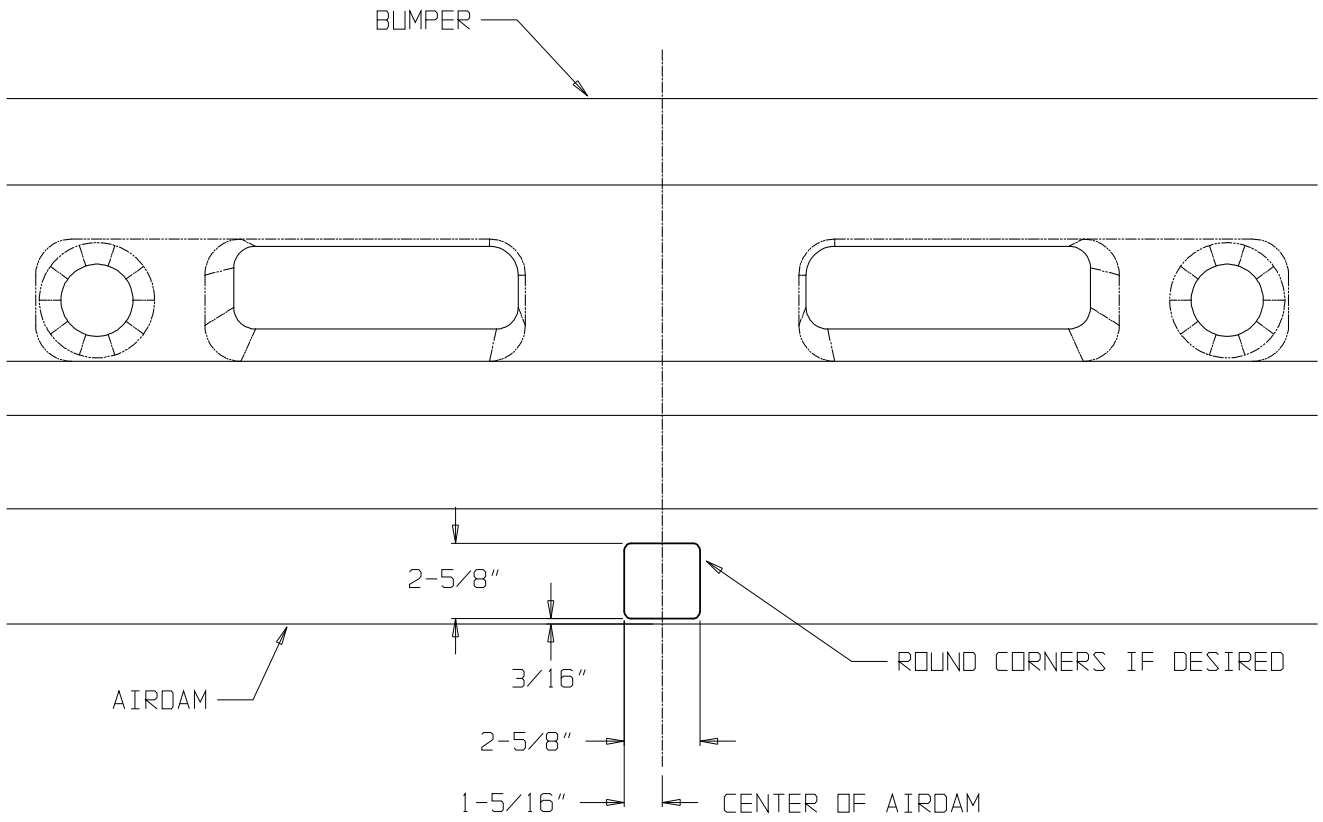
**NOTE: Follow the step by step sequence for fastest installation. Use the mounting holes that line up best on your truck, since there are variations year to year.**

1. Remove factory tow hooks and brackets if so equipped. If the vehicle has a plastic air dam under the bumper, cut a 2-1/2" x 2-1/2" square in the center as shown in Figure 2.
2. Take out front two bumper bracket bolts on each side. Leave rear bolt tight to hold bumper secure and aligned.
3. Install upper front bolt (7/16 x 1-1/2 furnished with kit) connecting factory bumper bracket to frame and tighten securely. See Figure 1. Now remove the rear factory bumper bracket bolt.

**FIGURE 1**



4. Install the Receiver using the two lower factory bumper bracket locations and the large slot to the rear. **Use flat washers wherever the bolt or nut seats against a slot.** Use the nut with wire handle at the rear slot inserting thru the square hole in the outside of the frame. Visibly line up nut with end of bolt by viewing thru slot on inside of frame.



**FIGURE 2**