

Parts List

| | |
|----|------------------------------------|
| 1 | Driver / left side bar |
| 1 | Passenger / right side bar |
| 1 | Driver / left front bracket |
| 1 | Passenger / right front bracket |
| 1 | Driver / left rear bracket |
| 1 | Passenger / right rear bracket |
| 24 | Hex bolt, M10 x 35mm |
| 8 | Hex nut, M10 |
| 24 | Flat washer, M10 x 30mm OD x 1.5mm |
| 8 | Flat washer, M10 x 22mm OD x 2mm |
| 24 | Lock washer, M10 |
| 8 | Clip nut, M10 |

Tools Required

| | |
|--------------|---------------|
| Ratchet | Torque wrench |
| Tape measure | Wrench, 17mm |
| Socket, 17mm | Level |

Torque Specifications

| METRIC | Torque Specifications | |
|----------|-----------------------|-------------|
| | M6 bolt | 3 ft.-lbs. |
| | M8 bolt | 7 ft.-lbs. |
| | M10 bolt | 16 ft.-lbs. |
| M12 bolt | 28 ft.-lbs. | |
| SAE | 1/4" bolt | 3 ft.-lbs. |
| | 5/16" bolt | 7 ft.-lbs. |
| | 3/8" bolt | 16 ft.-lbs. |
| | 7/16" bolt | 20 ft.-lbs. |
| | 1/2" bolt | 28 ft.-lbs. |

Use above torque setting unless otherwise noted

Level of Difficulty

Easy

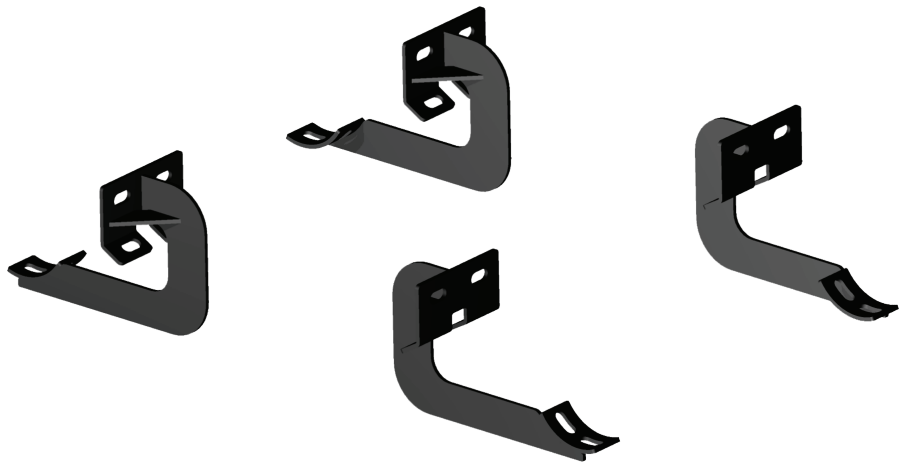


Scan for helpful install tips

Product Image



Brackets



Notes and Maintenance

Before you begin installation, read all instructions thoroughly.

Proper tools will improve the quality of installation and reduce the time required.

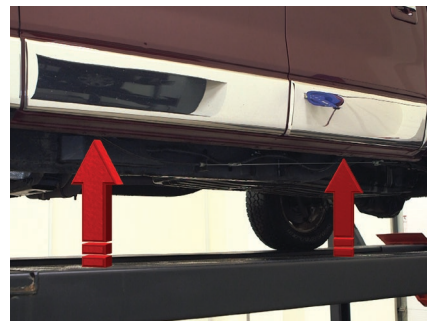
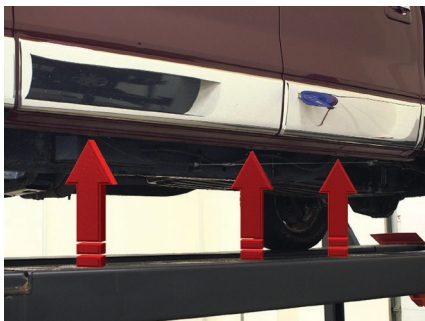
To protect the product, wax after installing. Regular waxing is recommended to add a protective layer over the finish. Do not use any type of polish or wax that may contain abrasives that could damage the finish.

For gloss black finishes, mild soap may be used to clean the product.

Refer to the table to the left when securing hardware during the installation process to help prevent damage to the product or vehicle.

Step 1

Starting on the driver side, locate the three mounting locations along the body. This installation will use the front and rear mounting points.



Step 2

The mounting brackets are specific to a front or rear mounting location. When mounting the brackets, have the cradle facing toward the middle of the truck for proper placement.



Step 3

Starting at the front, remove the factory tape or plug covering the mounting holes on the inner rocker panel.

Insert an M10 clip nut onto each mounting point.



Step 4

Lift the bracket into place and attach with an M10 hex bolt, locking washer and 30mm OD flat washer into the rocker panel and mounting tabs.

Snug the hardware, but do not fully tighten.



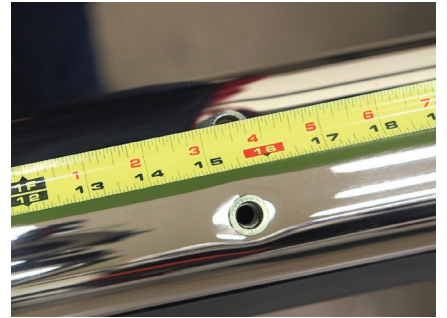
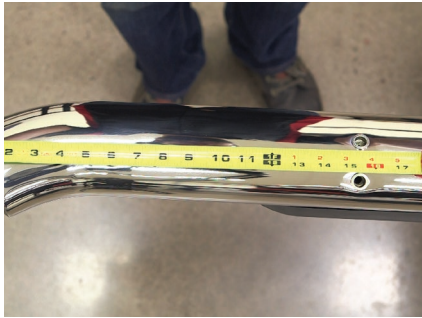
Step 5

Repeat this for the passenger-side bracket.



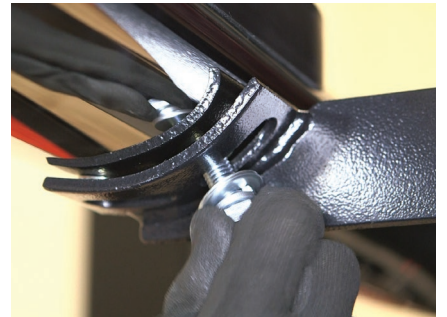
Step 6

To determine the front of the side bar, measure from the end of the side bar to the center of the rivet nut. This measurement should be 15 1/2".



Step 7

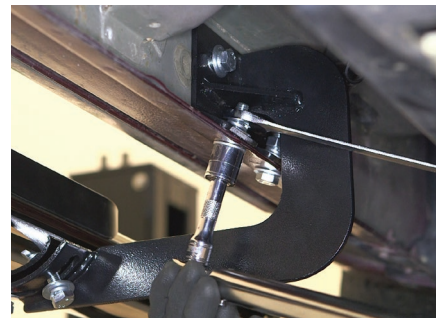
Lift the new side bar into place and attach with an M10 bolt, locking washer and 22mm OD flat washer.



Step 8

Check for level and adjust if necessary.

Once aligned, tighten all hardware.



Step 9

Repeat this entire process on the passenger side.



Step 10

Congratulation on the installation of your new ARIES 4" oval side bars.

With the side bars installed, periodic inspections should be performed to ensure all mounting hardware remains tight.

To protect your investment, see the 'Notes and Maintenance' section on the first page of this instruction manual.

