



INSTALLATION MANUAL

S223005

Parts List

1	Driver / left side bar
1	Passenger / right side bar
2	Mounting bracket, driver / left
2	Mounting bracket, passenger / right
16	Hex bolt, M8 x 35mm
8	Clip nut, M8
24	Flat washer, M8
16	Lock washer, M8
8	Hex nut, M8
8	Hex bolt, M10 x 25mm
8	Flat washer, M10
8	Lock washer, M10

Level of Difficulty

Easy



Scan for helpful install tips

Product Image



Torque Specifications

	Torque Specifications	
METRIC	M6 bolt	3 ft.-lbs.
	M8 bolt	7 ft.-lbs.
	M10 bolt	16 ft.-lbs.
	M12 bolt	28 ft.-lbs.
SAE	1/4" bolt	3 ft.-lbs.
	5/16" bolt	7 ft.-lbs.
	3/8" bolt	16 ft.-lbs.
	7/16" bolt	20 ft.-lbs.
	1/2" bolt	28 ft.-lbs.

Notes and Maintenance

Before you begin installation, read all instructions thoroughly.

Proper tools will improve the quality of installation and reduce the time required.

To protect the product, wax after installing. Regular waxing is recommended to add a protective layer over the finish. Do not use any type of polish or wax that may contain abrasives that could damage the finish.

For gloss black finishes, mild soap may be used to clean the product.

Refer to the table to the left when securing hardware during the installation process to help prevent damage to the product or vehicle.

Step 1

Starting on the driver side, locate the two mounting points underneath the vehicle.

Place the front driver-side bracket onto the vehicle. Be sure the cradle of the bracket faces the rear of the vehicle.

Secure the top of the bracket by inserting two clip nuts into the rectangular slots and attaching with two M8 hex bolts, lock washers and flat washers.

Snug the hardware, but do not fully tighten.

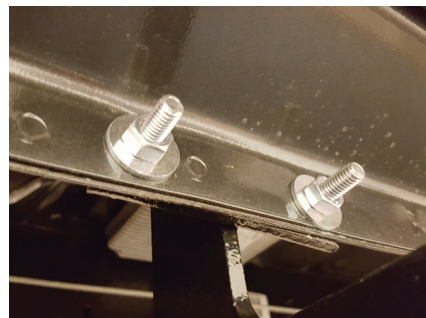


Step 2

Secure the lower mounting points with two M8 bolts, flat washers, lock washers and hex nuts.

Repeat this process to secure the rear mounting bracket.

Place the side bar onto the mounting brackets and align the mounting points.

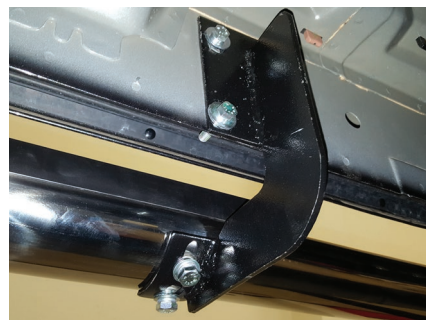
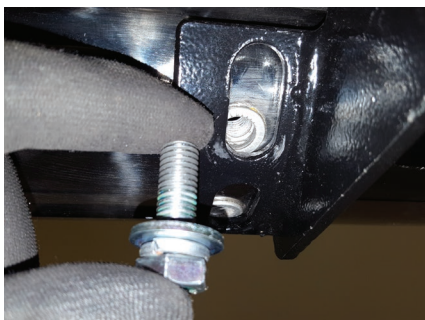


Step 3

Secure the side bar to the brackets using an M10 hex bolt and flat washer at each mounting point. Snug the hardware, but do not fully tighten.

Adjust and level the side bar.

With the side bar in position, it is recommended to tighten all brackets to the vehicle first, followed by the side bar connections.



Step 4

Repeat steps 1 through 3 on the passenger side of the vehicle.

Congratulations on the installation of your ARIES 4" oval side bars.

With the side bars installed, periodic inspections should be performed to ensure all mounting hardware remains tight.

To protect your investment, see the 'Notes and Maintenance' section on the first page of this instruction manual.

