



INSTALLATION INSTRUCTIONS

2007-14 TOYOTA CREW MAX
 SIDE BAR PART # S222013 / S222013-2

PARTS LIST

- | | | |
|---------------------------------|---|---------|
| (2) SIDE TUBES WITH STEPS | | |
| (2) FRONT MOUNT BRACKETS | (12) 8MM x 30MM 1.25 PITCH HEX HEAD BOLTS | |
| (2) CENTER BRACKETS | (12) 8MM FLAT WASHERS | |
| (2) REAR MOUNT BRACKETS | (12) 8MM LOCK WASHERS | |
| (12) 10MM X 30MM HEX HEAD BOLTS | (12) 10MM LOCK WASHERS | GEI EFG |
| (12) 10MM FLAT WASHERS | | |

PROCEDURE

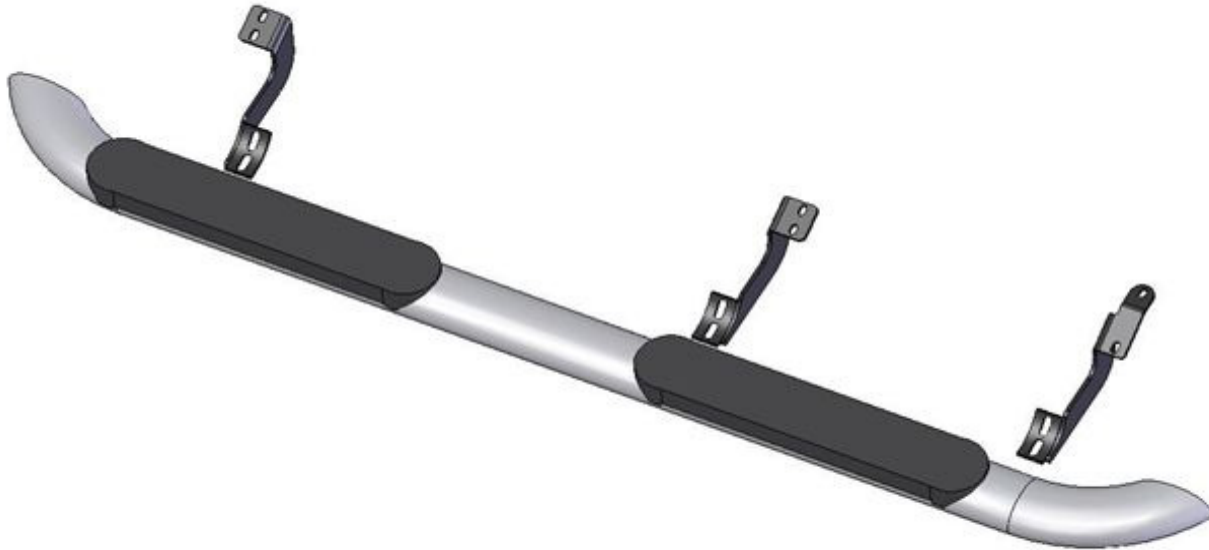
1. Begin installation by working on driver side of the vehicle.
2. Remove plastic plugs on rocker panel to locate mounting holes for brackets. Attach and secure Front, Center, and Rear Mount Bracket to existing holes using 8MM bolts, 8MM flat washers, and 8MM lock washers. For each outer hole and hand tighten.

HECra&Ua^A~ a^A[A[] dO^} c!Aa aU^a/Oias^o.A.a* A ADF€ { A@cA[] |o EA ADF€ { Aaa a @!•BAC ADF€
 || & A a @!•EU} ~* A a [A [Aa @} AaAa A^E
 Oab•Ua^A~ a^A [A@aA A^A aA} c!^aEa aAa @} AaA[] |o A A[] {]|^cA@aAia^E a^A
 A Aa•^ { a| EA

4. Repeat process for driver side of vehicle to complete installation.

Passenger side brackets

Rear show directly below



front of sidebar

NOTE: IT IS ADVISABLE TO RE-CHECK ALL FASTENERS FOR TIGHTNESS AFTER ONE WEEK.