



INSTALLATION INSTRUCTIONS

2007-13 TOYOTA DOUBLE CAB

SIDE BAR PART # S222012 / S222012-2

PARTS LIST

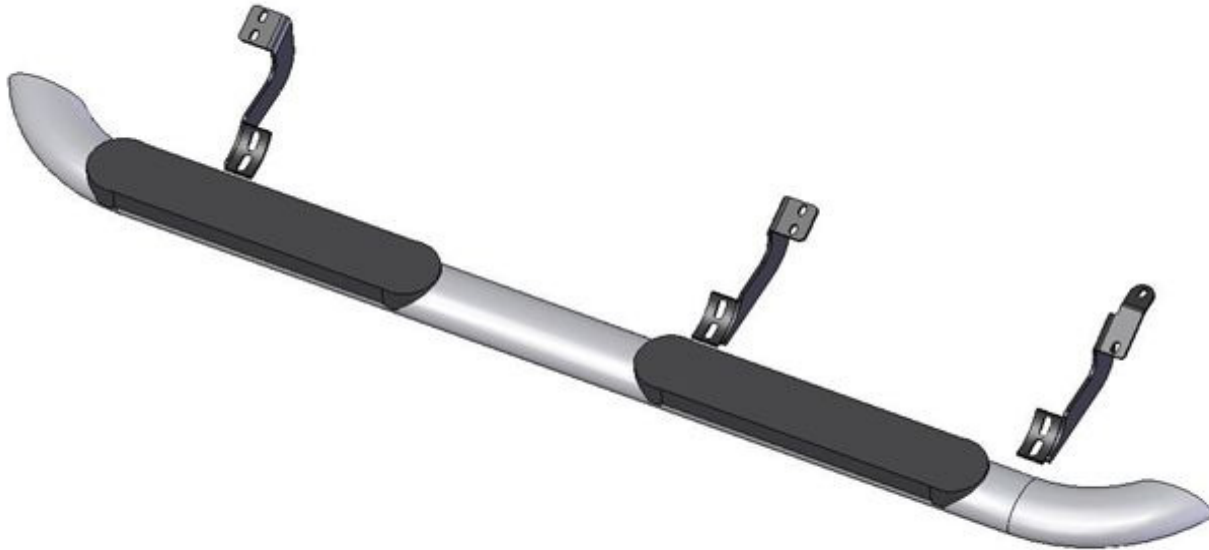
- | | |
|---------------------------------|---|
| (2) SIDE TUBES WITH STEPS | |
| (2) FRONT MOUNT BRACKETS | (12) 8MM x 30MM 1.25 PITCH HEX HEAD BOLTS |
| (2) CENTER BRACKETS | (12) 8MM FLAT WASHERS |
| (2) REAR MOUNT BRACKETS | (12) 8MM LOCK WASHERS |
| (12) 10MM X 30MM HEX HEAD BOLTS | (12) 10MM LOCK WASHERS |
| (12) 10MM FLAT WASHERS | |

PROCEDURE

1. Begin installation by working on driver side of the vehicle.
2. Remove plastic plugs on rocker panel to locate mounting holes for brackets. Attach and secure Front, Center, and Rear Mount Bracket to existing holes using 8MM bolts, 8MM flat washers, and 8MM lock washers. For each outer hole and hand tighten.
3. Attach Side Tube to Front, Center and Rear Brackets using (6) 10mm hex bolts, (6) 10mm flat washers & (6) 10mm lock washers, Snug but do not tighten at this time.
Adjust Side Tube so that it is level and centered, and tighten all bolts to complete the driver-side assembly.
4. Repeat process for driver side of vehicle to complete installation.

Passenger side brackets

Rear show directly below



front of sidebar

NOTE: IT IS ADVISABLE TO RE-CHECK ALL FASTENERS FOR TIGHTNESS AFTER ONE WEEK.