



INSTALLATION MANUAL

AL45-9004

Parts List

1	Bull bar
1	Driver / left, bull bar mounting bracket
1	Passenger / right, bull bar mounting bracket
1	Driver / left, lower mounting bracket
1	Passenger / right, lower mounting bracket
1	Driver / left, upper mounting bracket
1	Passenger / right, upper mounting bracket
4	Hex bolt, M8 - 1.25mm x 25mm
8	Flat washer, M8
4	Lock washer, M8
4	Hex nut, M8
4	Hex bolt, M10 - 1.5mm x 45mm
4	Flat washer, M10
4	Lock washer, M10
4	Hex bolt, fine thread, M12 - 1.25mm x 55mm
4	Hex bolt, course thread, M12 - 1.75mm x 35mm
12	Flat washer, M12
8	Lock washer, M12
4	Hex nut, M12

Tools Required

Ratchet	Torque wrench
Socket, 13mm	Socket, 18mm
Wrench, 13mm	Wrench, 18mm
Tape	Flathead screwdriver

Level of Difficulty

Easy



Scan for helpful install tips

Product Image



Notes and Maintenance

Before you begin installation, read all instructions thoroughly.

Proper tools will improve the quality of installation and reduce the time required.

For black finishes, mild soap may be used to clean the product.

Refer to the table below when securing hardware during the installation process to help prevent damage to the product or vehicle.

Torque Specifications

METRIC		SAE	
M6 bolt	3 ft.-lbs.	1/4" bolt	3 ft.-lbs.
M8 bolt	7 ft.-lbs.	5/16" bolt	7 ft.-lbs.
M10 bolt	16 ft.-lbs.	3/8" bolt	16 ft.-lbs.
M12 bolt	28 ft.-lbs.	7/16" bolt	20 ft.-lbs.
--	--	1/2" bolt	28 ft.-lbs.

Step 1

Starting underneath the vehicle, remove the hardware securing the driver-side tow hook to the frame of the vehicle.

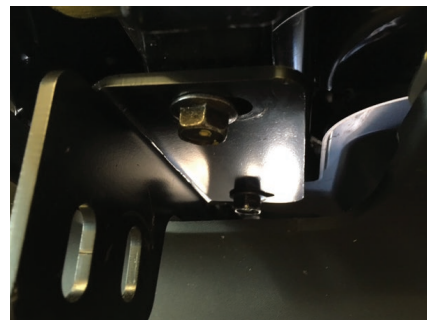


Step 2

Locate the passenger-side mounting bracket.

Hold the tow hook in place and align the bracket with the mounting holes. Attach the bracket using two M12 x 55mm fine thread hex bolts, two M12 lock washers and two M12 flat washers.

Repeat process for the driver-side mounting bracket. Snug the hardware, but do not fully tighten.



Step 3

Locate the passenger-side parking sensor. Remove the four clips securing the parking sensor housing using a flat head screwdriver. Remove the sensor from the housing.

Remove the inside hex head bolt from the frame. Place the passenger-side upper mounting bracket on to the vehicle and secure using the previously removed hex head bolt.

Snug the hardware, but do not fully tighten.



Step 4

Measure from the top and bottom of the passenger-side upper mounting bracket to the inner-edge of the housing mount.

Mark on the parking sensor housing using the previous measurements.

Carefully remove cut an opening in the sensor housing. Reinstall the parking sensor housing.

Repeat this process on the driver-side.



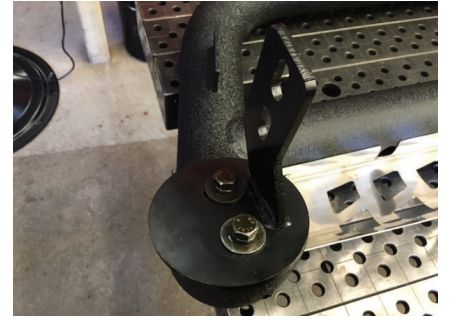
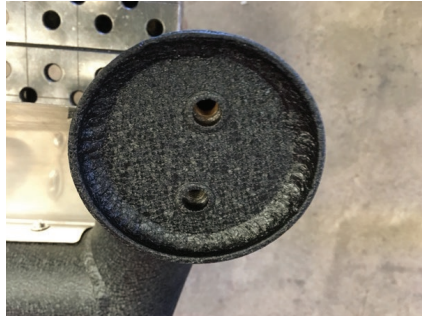
Step 5

Place the bull bar on a clean, stable work surface.

Locate the driver-side bull bar bracket and secure the bracket to the bull bar using two M10 x 45 hex bolts, two M10 lock washers and two M10 flat washers.

Repeat this process for the passenger-side bull bar mounting bracket.

Snug the hardware, but do not fully tighten.



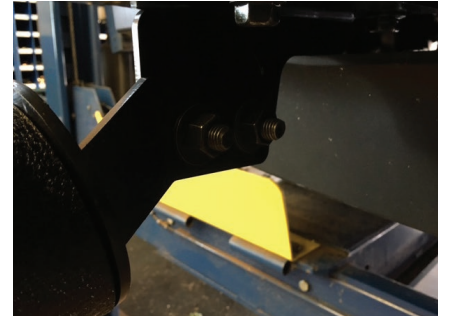
Step 6

With help, lift the bull bar into position.

Secure the bull bar to the driver-side mounting brackets using two M12 x 35mm hex bolts and two M12 flat washers through the outside of the brackets and two M12 flat washers, two M12 lock washers and two M12 hex nuts on the inside.

Snug the hardware, but do not fully tighten.

Repeat process on the passenger-side.

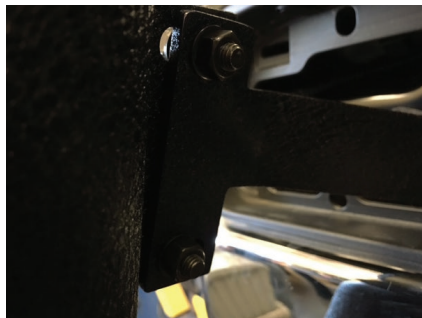


Step 7

Secure the upper mounting brackets to the bull bar using four M8 x 25mm hex bolts, eight M8 flat washers, four M8 lock washers and four M8 hex nuts.

At this time, level and adjust the bull bar to the desired location.

With the bull bar in position, it is recommended to tighten all brackets to the vehicle first, followed by the bull bar connections.



Step 8

Congratulations on the installation of your new ARIES 4" Big Horn™ bull bar.

With the bull bar installed, periodic inspections should be performed to ensure all mounting hardware remains tight.

To protect your investment, see the 'Notes and Maintenance' section on the first page of this instruction manual.

