

INSTALLATION INSTRUCTIONS

**BIG HORN BULL BAR
2008 FORD SUPER DUTY F250/F350
PART NUMBER 45-3006**

PARTS LIST:

1	Bull Bar
1	Driver/Left side Mounting Bracket
1	Passenger/Right Mounting Bracket
4	3/8" x 1 1/4" Hex Head Bolts
4	3/8" Nylock Nuts
8	3/8" Flat Washers

PROCEDURE:

- 1. REMOVE CONTENTS FROM BOX. VERIFY ALL PARTS ARE PRESENT. READ INSTRUCTIONS CAREFULLY BEFORE STARTING INSTALLATION.**
- 2. NOTE:** It may be necessary to remove/relocate front license plate and license plate bracket. It is not required, but strongly recommended. If local/state law requires a license plate, license plate relocation kit is available.
- From front of vehicle remove the driver side bumper mount bolts (Figure 2).
WARNING! Do not remove passenger and driver bumper mount bolts at the same time. Remove one side at a time.
- Place Mounting Bracket onto vehicle and line it up against the outer gusset bend on the frame. Leave about 1/8" clearance between bottom of Mounting Bracket and bumper. Secure Mounting Bracket to vehicle using the factory bolts (Figure 3). Fully tighten these bolts at this time.
- Once the driver side Mounting Bracket is fully tightened, repeat steps 2 - 4 for passenger side Mounting Bracket.
- With help position Bull Bar on the outer side of Mounting Brackets. Attach Bull Bar to Mounting Brackets using the included (4) 3/8" x 1 1/4" Hex Head Bolts, (4) 3/8" Nylock Nuts, and (8) 3/8" Flat Washers (Figure 4). Do not tighten at this time.
- Level and adjust Bull Bar as desired, then tighten all hardware at this time.
- Do periodic inspections to the installation to make sure that all hardware is secure and tight..

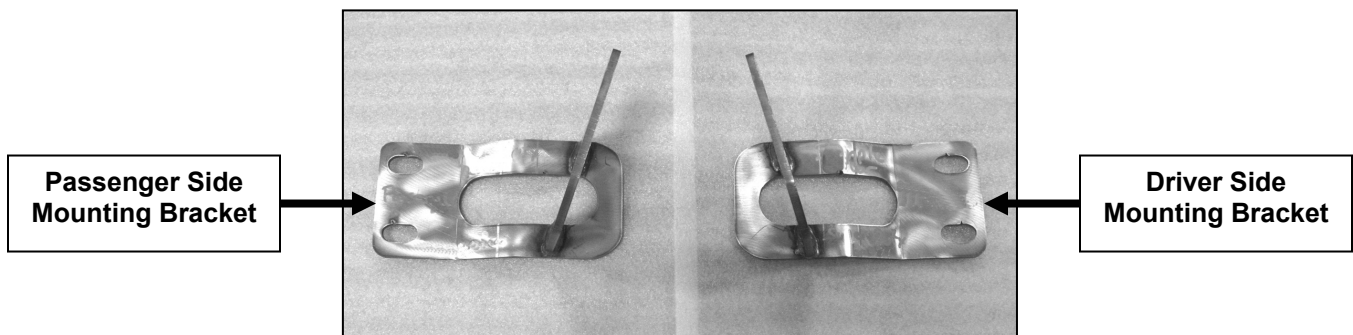


Figure 1

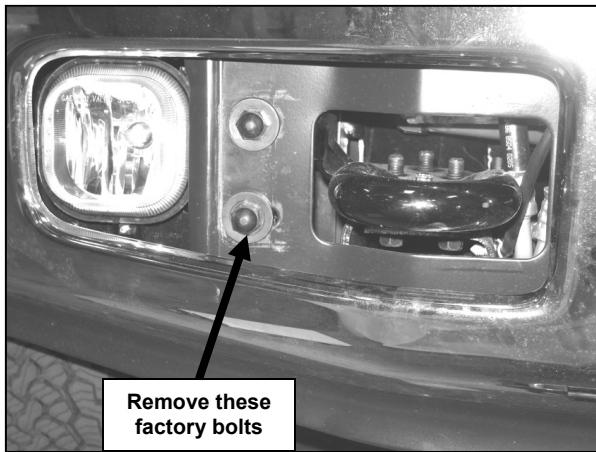


Figure 2

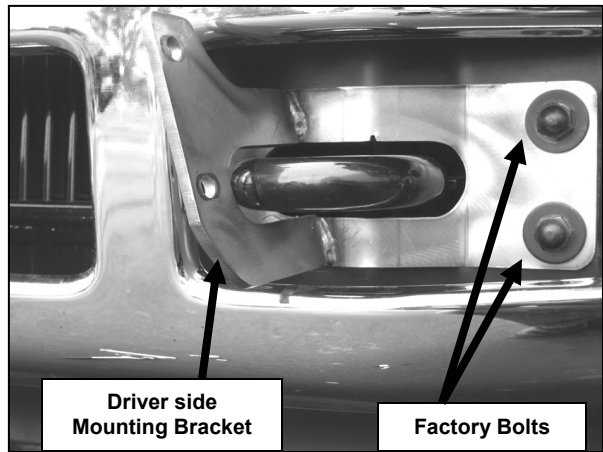


Figure 3

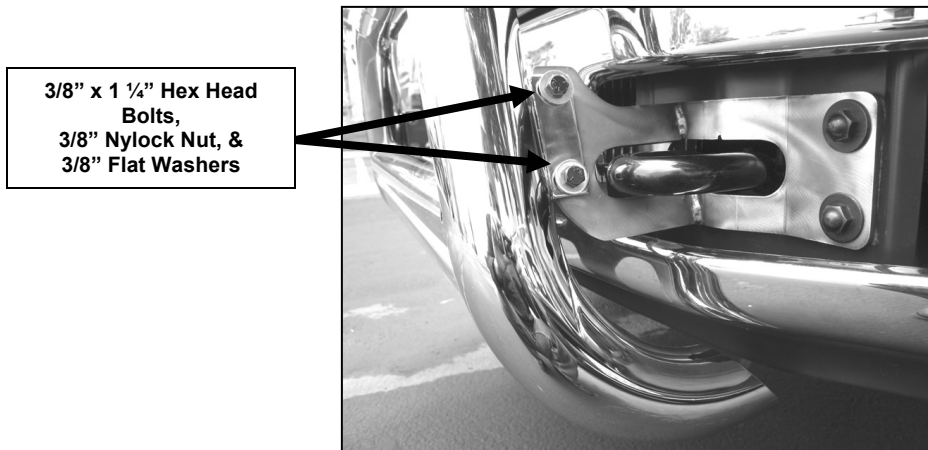


Figure 4



Figure 5