

Parts List

1	Driver / left side bar
1	Passenger / right side bar
6	Mounting bracket, universal
24	Hex bolt, M8 - 1.25 x 25mm
24	Flat washer, M8
24	Lock washer, M8
12	Clip nut, M8

Tools Required

Torque wrench	Socket, 13mm
Flathead screwdriver	Socket, 16mm
Level	--

Torque Specifications

	Torque Specifications	
METRIC	M6 bolt	3 ft.-lbs.
	M8 bolt	7 ft.-lbs.
	M10 bolt	16 ft.-lbs.
	M12 bolt	28 ft.-lbs.
SAE	1/4" bolt	3 ft.-lbs.
	5/16" bolt	7 ft.-lbs.
	3/8" bolt	16 ft.-lbs.
	7/16" bolt	20 ft.-lbs.
	1/2" bolt	28 ft.-lbs.

Level of Difficulty

Easy

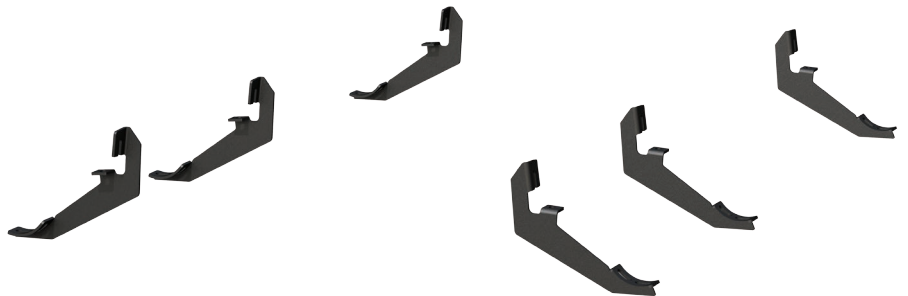


Scan for helpful install tips

Product Image



Brackets and Hardware



Notes and Maintenance

Before you begin installation, read all instructions thoroughly.

Proper tools will improve the quality of installation and reduce the time required.

To protect the product, wax after installing. Regular waxing is recommended to add a protective layer over the finish. Do not use any type of polish or wax that may contain abrasives that could damage the finish.

For black finishes, mild soap may be used to clean the product.

Refer to the table to the left when securing hardware during the installation process to help prevent damage to the product or vehicle.

Step 1

Starting on the driver side, locate the three mounting locations underneath the vehicle.



Step 2

Starting at the front driver-side mounting location, remove the two hole plugs.

Insert a clip-nut through the access hole and align it over the adjacent smaller hole. Insert a second clip nut over the lower mounting tab.

Place the driver-side front mounting bracket onto the vehicle and secure with two M8 hex bolts, two M8 lock washers and two M8 flat washers.

Snug the hardware. Do not fully tighten.



Step 3

Repeat step 2 to install the middle and rear mounting brackets.

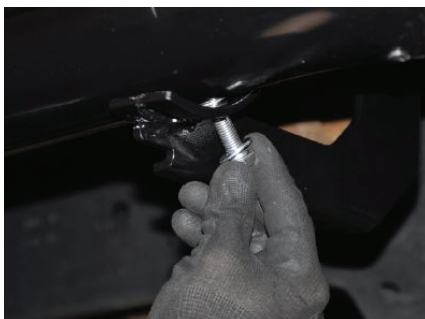


Step 4

Place the side bar onto the mounting brackets and align the mounting points.

Secure the side bar to the brackets using a M8 hex bolt, lock washer and flat washer at each mounting location.

Snug the hardware. Do not fully tighten.



Step 5

Adjust and level the side bar.

With the side bar in position, it is recommended to tighten all brackets to the vehicle first, followed by the side bar connections.



Step 6

Repeat steps 1 through 5 on the passenger side of the vehicle.

Congratulations on the installation of your new ARIES 4" Big Step side bars.

With the side bars installed, periodic inspections should be performed to ensure all mounting hardware remains tight.

To protect your investment, see the 'Notes and Maintenance' section on the first page of this instruction manual.

