



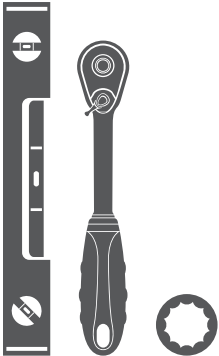
# AL233043 INSTALLATION MANUAL

## Parts List

1	Driver / left side bar
1	Passenger / right side bar
6	Mounting bracket, universal
30	Flat washer, M8
18	Flat washer, nylon, M8
12	Lock washer, M8
18	Nylock nut, M8 x 1.25, CL8.8
12	Hex bolt, 8mm

## Tools Required

Ratchet	Level
Socket, 13mm	



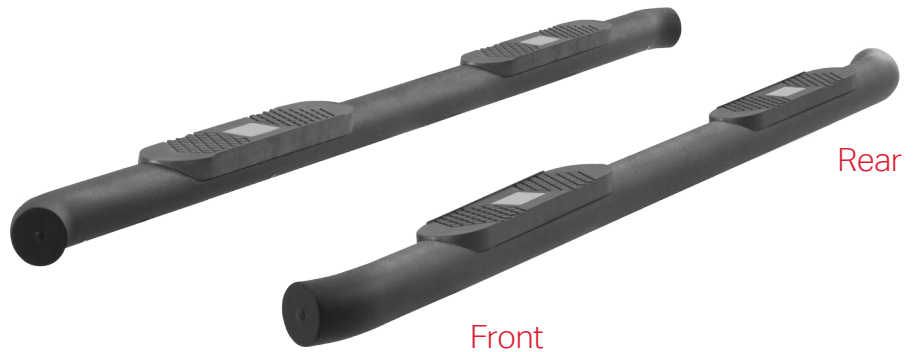
## Level of Difficulty

Easy



Scan  
for helpful  
install tips

## Product Image



## Brackets and Hardware



## Notes and Maintenance

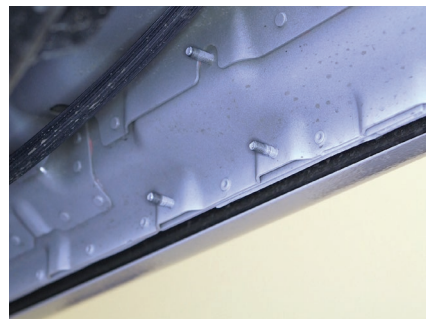
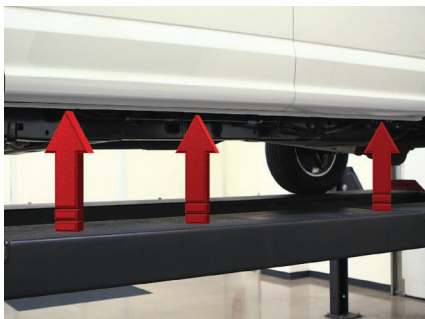
Before you begin installation, read all instructions thoroughly.

Proper tools will improve the quality of installation and reduce the time required.

### Step 1

Starting on the driver side, locate the three mounting locations on the inside of the rocker panel.

There will be three 8mm studs in each location to secure the brackets.



### Step 2

Locate the six mounting brackets. The mounting brackets are universal and will fit on both the driver and passenger sides.



### Step 3

Starting at the front, place a nylon washer over the factory bolts, followed by the bracket.

Note: It is important to install the nylon washers first to prevent a corrosion effect from the aluminum body and steel bracket.



### Step 4

Add an 8mm flat washer, and secure with a nylock nut.

Snug the hardware with a 13mm socket, but do not fully tighten.



### Step 5

Repeat steps 3 and 4 to install the middle and rear brackets on the driver side mounting locations.

Snug the hardware, but do not fully tighten.

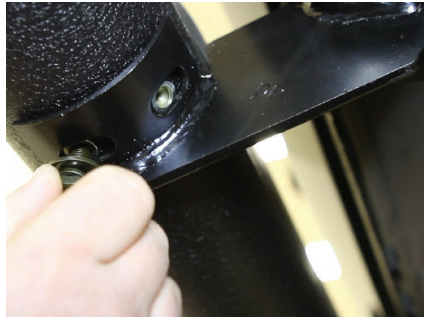


### Step 6

Carefully place the side bar onto the brackets and ensure the rivet nuts on the bottom of the side bar line up with the brackets.

Attach the side bar to the brackets using the supplied 8mm hex bolt, lock washers and flat washers.

Snug the hardware, but do not fully tighten.



### Step 7

With all the hardware installed, we recommend tightening all of the vehicle connections first, followed by the side bar connections.

Check for level and adjust if necessary.

Once aligned, tighten all hardware.

Repeat this entire process on the passenger side.



### Step 8

Remember to do periodic inspections to make sure that all hardware is secure and tight.

Congratulations on the installation of your brand new ARIES 4" Big Step side bars.

