

Parts List

| | |
|----|---|
| 1 | Driver / left side bar |
| 1 | Passenger / right side bar |
| 4 | Mounting bracket, universal |
| 4 | Bolt plate, stainless steel |
| 16 | Flat washer, M6 |
| 16 | Nylock nut, M6 x 1, CL8.8 |
| 8 | Clip nut, 8mm |
| 16 | Hex head cap screw, M8 x 1.25 - 25mm, CL8.8 |
| 16 | Flat washer, M8 |
| 16 | Lock washer, M8 |
| 8 | Hex nut, M8 x 1, CL8.8 |

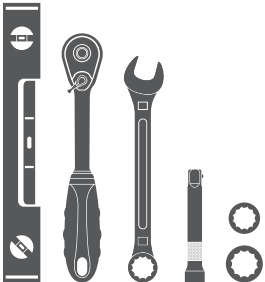
Additional Hardware*

| | |
|----|---------------------------------|
| 16 | T-bolt, M8 x 1.25 - 25mm, CL8.8 |
| 16 | Flat washer, M8 |
| 16 | Lock washer, M8 |
| 16 | Hex nut, M8 x 1, CL8.8 |

* Aluminum side bars are supplied with additional hardware. Quantities listed are in addition to the standard supplied hardware.

Tools Required

| | |
|-------------------|--------------|
| Ratchet | Socket, 10mm |
| Ratchet extension | Socket, 14mm |
| Level | Wrench, 14mm |



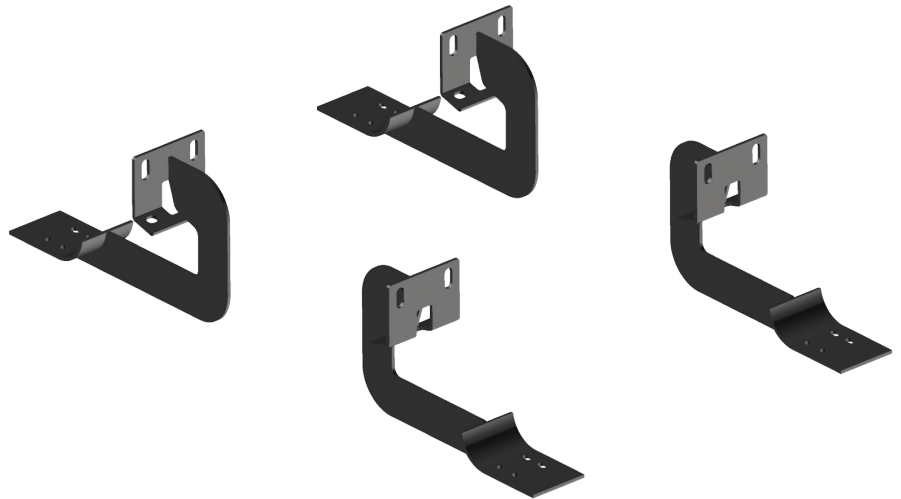
Level of Difficulty

Easy



Scan for helpful install tips

Product Image



Notes and Maintenance

Before you begin installation, read all instructions thoroughly.

Proper tools will improve the quality of installation and reduce the time required.

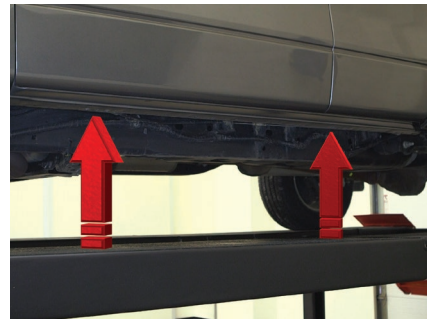
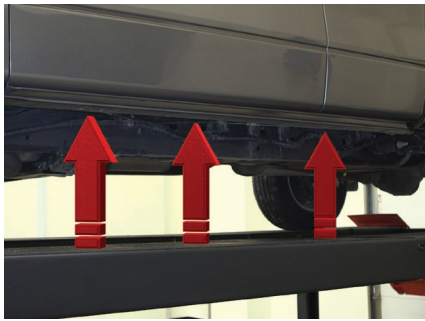
To protect the product, wax after installing. Regular waxing is recommended to add a protective layer over the finish. Do not use any type of polish or wax that may contain abrasives that could damage the finish.

For stainless steel and aluminum, polish may be used to clear small scratches and scuffs on the finish. Mild soap may be used also to clean the product.

Step 1

Starting on the driver side, locate the three pinch weld factory holes along the bottom edge of the vehicle body.

We will be using the front and rear mounting locations.



Step 2

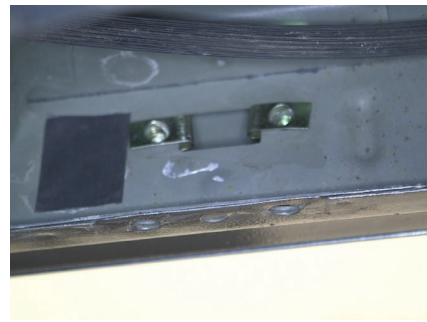
The mounting brackets are universal and will fit the driver and passenger sides.

Locate the front driver-side mounting point. Using a utility knife, cut and remove the tape plug covering the mounting holes on the inner rocker panel.



Step 3

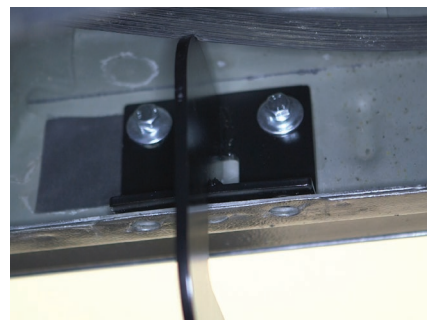
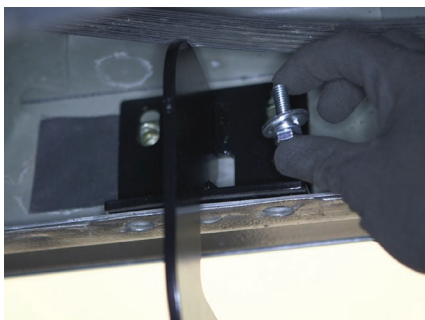
With the mounting holes exposed, insert an 8mm clip nut into each mounting point.



Step 4

Place the front driver-side bracket onto the vehicle and secure with an 8mm hex bolt, 8mm flat washer and 8mm lock washer on each clip nut

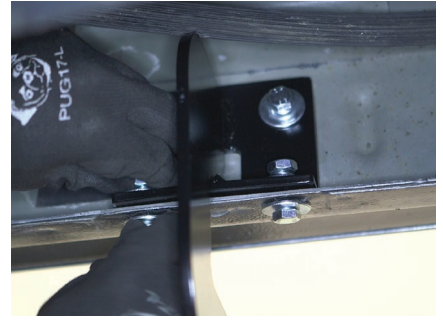
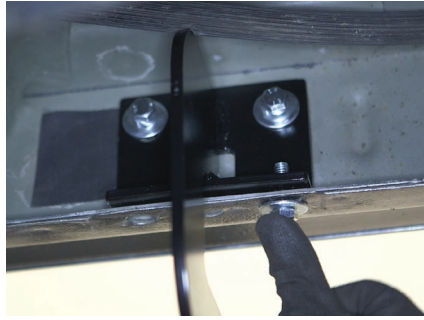
Snug the hardware, but do not fully tighten.



Step 5

Finish securing the front mounting bracket by inserting two 8mm hex bolts and 8mm flat washers up through the bottom of the pinch welds and securing them with two 8mm flat washers, two 8mm lock washers and two 8mm hex nuts.

Snug the hardware, but do not fully tighten.



Step 6

Repeat steps 2 through 5 to secure the rear driver-side mounting bracket.



Step 7

Carefully place the side bar onto the brackets with the larger step pad towards the front of the vehicle.



Step 8A - For Polished Stainless Steel Side Bars

Insert a bolt plate into the bottom channels of the side bar as shown.

Slide the bolt plate forward to the front bracket and insert the studs through the bracket cradle. Repeat this for the rear bracket.

Secure the side bar to the brackets using eight 6mm flat washers and hex nuts.

Snug the hardware, but do not fully tighten.



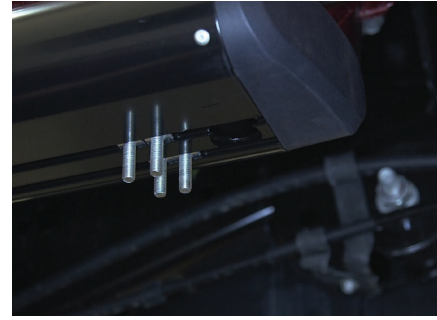
Step 8B - For Semi-Gloss Black, Aluminum Side Bars

Insert four T-bolts into the bottom channels of the side bar as shown.

Slide the bolts forward to the front bracket and insert them through the bracket cradle. Repeat this for the rear bracket.

Secure the side bar to the brackets using eight 8mm flat washers, lock washers and hex nuts.

Snug the hardware, but do not fully tighten.



Step 9

Adjust and level the side bar, centering it between the front and rear wheel wells.

With the side bar in position, it is recommended to tighten all brackets to the vehicle first, followed by the side bar connections.



Step 10

Repeat steps 1 through 9 on the passenger side of the vehicle.

Congratulations on the installation of your brand new ARIES 6" oval side bars.

With the side bars installed, periodic inspections should be performed to ensure all mounting hardware remains tight.

To protect your investment, see the 'Notes and Maintenance' section on the first page of this instruction manual.

