

INSTALLATION MANUAL

4490

Level of Difficulty

Easy

Parts List

2	6" oval side bar
6	Universal bracket
6	Stainless steel bolt plate
24	Flat washer, M6
24	Nylock nut, M6
12	Flat washer, M8
12	Lock washer, M8
12	Hex head cap screw, M8
12	Clip nut, M8
6	Nut, M8

*Not all hardware may be used.
Some hardware is vehicle-specific

Additional Hardware*

24	T-bolt, M8
24	Flat washer, M8
24	Lock washer, M8
24	Hex nut, M8

*Aluminum side bars are supplied with additional hardware. Quantities listed are in addition to the standard supplied hardware.

Tools Required

Ratchet	Socket, 10mm
Ratchet extension	Socket, 13mm
Level	--

Torque Specifications

	Metric		
	M6 bolt		3 ft.-lbs.
M8 bolt		7 ft.-lbs.	
M10 bolt		16 ft.-lbs.	
M12 bolt		28 ft.-lbs.	
SAE	1/4" bolt		3 ft.-lbs.
	5/16" bolt		7 ft.-lbs.
	3/8" bolt		16 ft.-lbs.
	7/16" bolt		20 ft.-lbs.
	1/2" bolt		28 ft.-lbs.

Use above torque setting unless otherwise noted

Product Photo



6" Oval Side Bars (not included)



Notes and Maintenance

Before you begin installation, read all instructions thoroughly.

Proper tools will improve the quality of installation and reduce the time required.

To protect the product, wax after installing. Regular waxing is recommended to add a protective layer over the finish. Do not use any type of polish or wax that may contain abrasives that could damage the finish.

For polished, gloss and other smooth finishes, polish may be used to clear small scratches and scuffs on the finish.

Mild automotive detergent may be used to clean the product. Do not use dish detergent, abrasive cleaners, abrasive pads, wire brushes or other similar products that may damage the finish.

Refer to the table to the left when securing hardware during the installation process to help prevent damage to the product or vehicle.

Product Registration

CURT Group stands behind our products with industry leading warranties. You can help us continue to improve our product line and help us understand your needs by registering your purchase by visiting:

warranty.curtgroup.com/surveys

At CURT Group, customer is king. We value your feedback and we use that information to make improvements on our products. Please, take a minute and let us know how we are doing.

Step 1

Locate the mounting tabs along the bottom edge of the vehicle body.

For crew cab models, use the first, second and fifth mounting locations.

For extended and double cab models, use the first, second and fourth mounting locations.

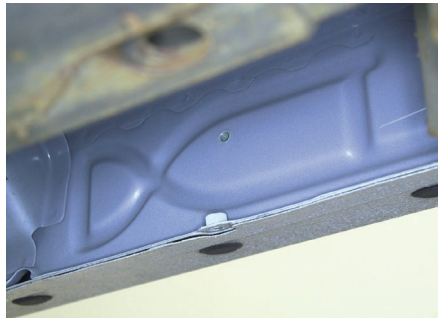


Step 2A

Starting on the front driver-side mounting location, place a universal bracket over the two factory mounting locations.

Attach the bracket to the body panel using two M8 hex bolts, lock and flat washers.

Snug the hardware, but do not fully tighten.

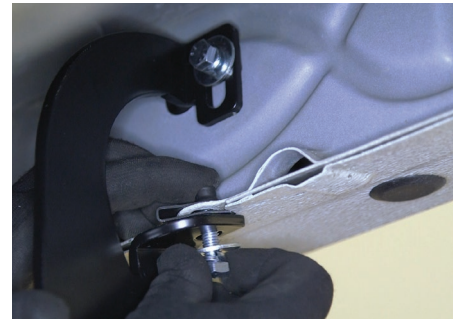


Step 2B

Note: Some models have threaded studs and require using M8 nuts, clip nut, lock washers and flat washers.

If required, slide an M8 clip nut over the mounting tab with the nut on the top surface.

Attach the bracket to the body panel using an M8 hex bolt, lock washer and flat washer.



Step 3

Repeat steps 2A and 2B to install the second bracket over the second mounting tab location from step 1.



Step 4

Locate the fourth mounting location from step 1 and remove the rubber plug from the access hole.

Insert a clip nut through the access hole and align it over the adjacent small hole.



Step 5

Repeat step 2B to secure the bottom of the bracket with an M8 clip nut, bolt, lock washer and flat washer.

Secure the bracket to the body panel using an M8 hex bolt, lock washer and flat washer.



Step 6

Carefully place the side bar on the brackets with the larger step pad toward the front of the vehicle.



Step 7A - For Stainless Steel Side Bars

Insert a bolt plate into the bottom channels of the side bar as shown.

Slide the bolt plate forward to the front bracket and insert the studs through the bracket cradle. Repeat this for the rear brackets.

Secure the side bar to the brackets using M6 flat washers and nylock nuts.

Snug the hardware, but do not fully tighten.



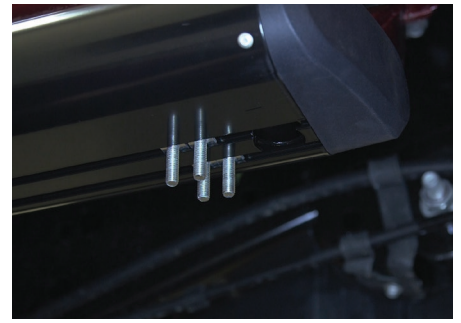
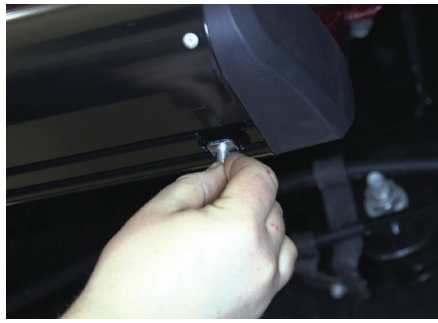
Step 7B - For Aluminum Side Bars

Insert four T-bolts into the bottom channels of the side bar as shown.

Slide the bolts forward to the front bracket and insert them through the bracket cradle. Repeat this for the rear bracket.

Secure the side bar to the brackets using M8 flat washers, lock washers and nuts.

Snug the hardware, but do not fully tighten.



Step 8

At this time, adjust the sidebar to the desired location.

With the sidebar in position, it is recommended to tighten all brackets to the vehicle first, followed by the side bar connections.

See page 1 for recommended torque specifications.



Step 9

Repeat steps 1 through 8 on the passenger side of the vehicle.

Congratulations on the installation of your new ARIES 6" oval side bars.

With the side bars installed, periodic inspections should be performed to ensure all mounting hardware remains tight.

To protect your investment, see the 'Notes and Maintenance' section on the first page of this instruction manual.

