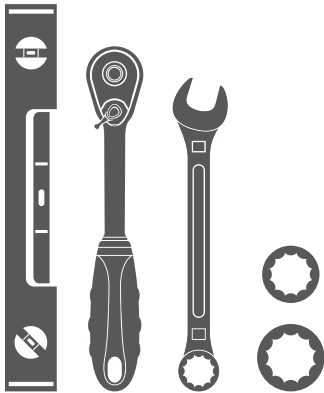


### Parts List

1	Driver / left side bar
1	Passenger / right side bar
6	Mounting bracket
12	Clip on nut, 8mm
12	Hex bolt, 8mm x 25mm
12	Flat washer, 8mm
12	Lock washer, 8mm
15	Hex bolt, 10mm x 25mm
21	Flat washer, 10mm
18	Lock washer, 10mm
3	Bolt plate, 10mm
6	Hex nut, 10mm
2	Rear L-support bracket
1	Def-tank L-bracket
1	Def-tank support bracket

### Tools Required

Ratchet	Level
Socket, 13mm	Wrench, 16mm
Socket, 16mm	



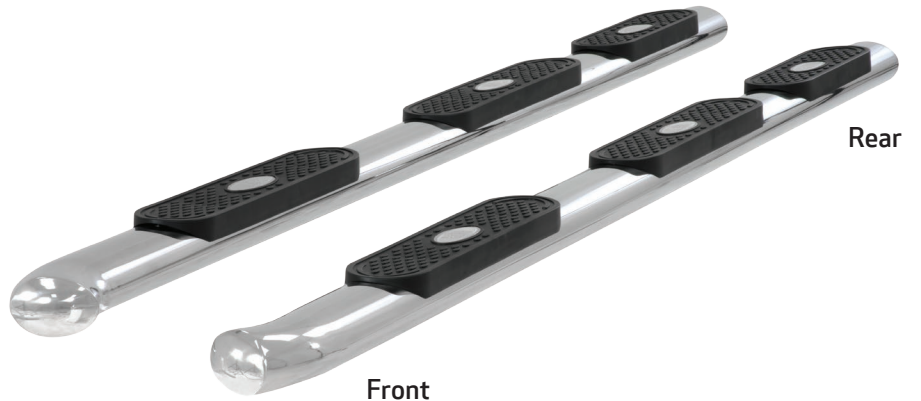
### Level of Difficulty

Easy

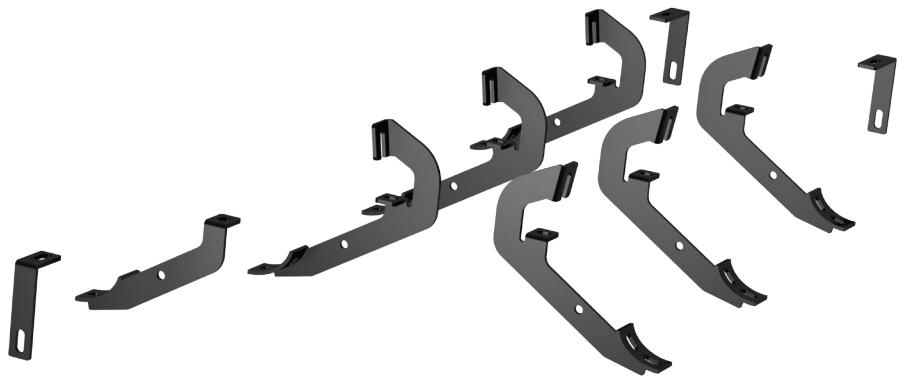


Scan for helpful install tips

### Product Image



### Brackets and Hardware



### Notes and Maintenance

Before you begin installation, read all instructions thoroughly.

Proper tools will improve the quality of installation and reduce the time required.

To protect the product, wax after installing. Regular waxing is recommended to add a protective layer over the finish. Do not use any type of polish or wax that may contain abrasives that could damage the finish.

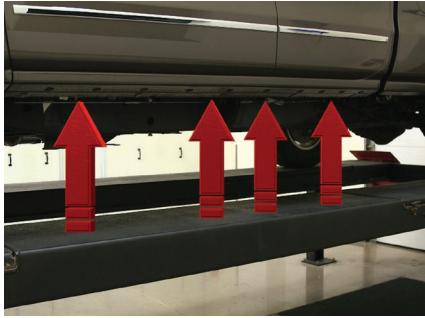
For stainless steel and aluminum, polish may be used to clear small scratches and scuffs on the finish. Mild soap may be used also to clean the product.

### Step 1

Locate the four mounting tabs along the bottom edge of the vehicle body.

This installation will use the first, second, and fourth mounting tabs.

Make sure to use the two rear brackets in the rear position only.



### Step 2

Starting at the front driver side mount location, locate the hole plug and remove it. Install two clip nuts.



### Step 3

Secure the bracket with two 8mm hex bolts, two lock washers and two flat washers. Snug the hardware, but do not fully tighten.



### Step 4

Repeat step 3 to install the second bracket over the second mounting tab location from step 1.



### Step 5

Locate the fourth tab location from step 1 and remove the upper and lower rubber plug from the access hole.

Insert a clip nut through the access hole and align it over the adjacent small hole.



### Step 6

Slide a second clip nut over the lower mount location and insert the 10mm bolt plate into lower access hole.



### Step 7

Secure the top and bottom of the bracket with an 8mm hex bolt, lock washer and flat washer.

Secure the bolt plate to the rear L-bracket with a 10mm flat washer, 10mm lock washer and 10mm hex nut.

Secure the L-bracket to the support bracket using a 10mm bolt, two 10mm flat washers, one 10mm lock washer and one 10mm nut.

Snug the hardware, but do not fully tighten.



### Step 8

Carefully position the side bar onto the mounting brackets.

Ensure all the mount locations on the bottom of the side bar line up with the mounting brackets.

Note: If the holes on the side bar do not match up with the brackets, ensure all the brackets have been installed in the correct locations.



### Step 9

Attach the side bar to the brackets with six of the 10mm hex bolts, locking washers and flat washers.

Snug the hardware, but do not fully tighten.



### Step 10

With all the hardware installed we recommend tightening all of the vehicle connections first, followed by the side bar connections.

Check for level and adjust if necessary.

Once aligned, tighten all hardware.

To install the passenger side rail, repeat steps 1 through 9 on the passenger side.

**Note:** For diesel trucks, the front bracket on the passenger side will require the included Def tank support bracket and the Def tank L-bracket. Follow steps 11 through 16 for diesel applications.

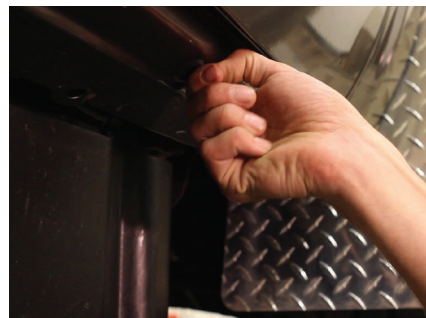


### Step 11

Locate the specialty bracket components for diesel truck models.

Begin the install by locate the round factory hole in the bottom of the rocker panel closest to the front tire opening.

Remove the plastic plug to expose the mounting hole in the rocker panel.



### Step 12

Insert the 10mm bolt plate into the access hole in the rocker panel.

Push the plastic retainer onto the threaded end of the bolt plate to help hold the plate in position.



### Step 13

Select the 'L' shaped support bracket.

Attach the short end of the bracket to the bolt plate with the flat washer, lock washer and 10mm hex nut.

Snug the hardware, but do not fully tighten.



### Step 14

Slide an 8mm clip nut onto the mounting tab.

Fasten the sidebar mounting bracket with a flat washer, lock washer and 8mm hex bolt.

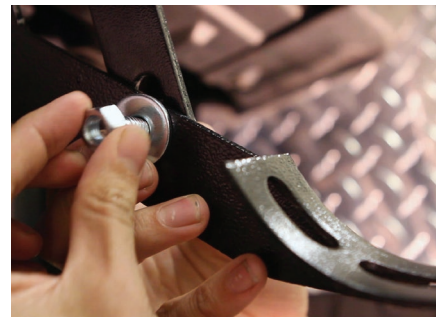
Snug the hardware, but do not fully tighten.



### Step 15

Bolt the mounting bracket to the back of the 'L' support bracket using a 10mm hex bolt flat washers, and lock washer.

Snug the hardware, but do not fully tighten.



### Step 16

Finish the passenger side rail installation by repeating the installation process used on steps 11 through 15 on the driver side.

Congratulations on the installation of your new ARIES 4" oval wheel-to-wheel side bars.

With the side bars installed, periodic inspections should be performed to ensure all mounting hardware remains tight.

To protect your investment, see the 'Notes and Maintenance' section on the first page of this instruction manual.

