

Parts List

1	Driver / left side bar
1	Passenger / right side bar
1	Driver / left mounting bracket, front
1	Passenger / right mounting bracket, front
1	Driver / left mounting bracket, rear
1	Passenger / right mounting bracket, rear
6	Button-head bolt, M6
12	Fender washer, M6
6	Nylock nut, M6
12	Hex bolt, M10 x 25mm
12	Flat washer, M10
12	Lock washer, M10
4	Nut plate, M10

Tools Required

Ratchet	Socket, 10mm
Phillips Screwdriver	Socket, 16mm

Torque Specifications

	METRIC	SAE
M6 bolt	3 ft.-lbs.	
M8 bolt	7 ft.-lbs.	
M10 bolt	16 ft.-lbs.	
M12 bolt	28 ft.-lbs.	
1/4" bolt		3 ft.-lbs.
5/16" bolt		7 ft.-lbs.
3/8" bolt		16 ft.-lbs.
7/16" bolt		20 ft.-lbs.
1/2" bolt		28 ft.-lbs.

Use above torque setting unless otherwise noted

Level of Difficulty

Easy



Scan for helpful install tips

Product Image



Brackets



Notes and Maintenance

Before you begin installation, read all instructions thoroughly.

Proper tools will improve the quality of installation and reduce the time required.

To protect the product, wax after installing. Regular waxing is recommended to add a protective layer over the finish. Do not use any type of polish or wax that may contain abrasives that could damage the finish.

For stainless steel and aluminum, polish may be used to clear small scratches and scuffs on the finish. Mild soap may be used also to clean the product.

Refer to the table to the left when securing hardware during the installation process to help prevent damage to the product or vehicle.

Step 1

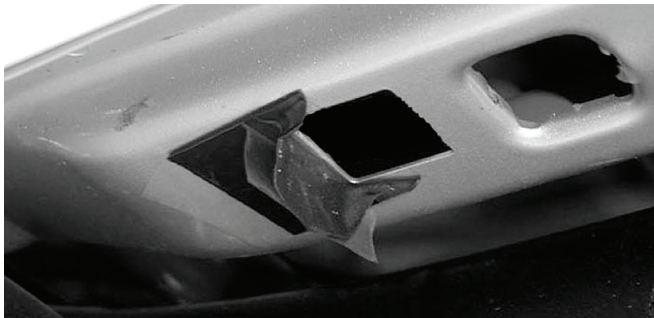
Locate the driver and passenger-side mounting brackets. The driver side will be installed first.

Note: Each bracket is specific to a mounting location and is stamped accordingly.



Step 2

Locate and remove the thin foam adhesive tape glued over the driver-side mounting locations in the subframe.



Step 3

Install the nut plate with the nut facing upwards.



Step 4

Place the driver-side front mounting bracket onto the vehicle and secure with an M10 hex bolt, lock washer and flat washer.

Snug the hardware, but do not fully tighten.

Repeat this process to install the driver-side rear mounting bracket.



Step 6

Install two button-head bolts, fender washers and nylock nuts into the side of the front mounting bracket.

Install the one button-head bolt, fender washer and nylock nut into the side of the rear mounting bracket.

Snug the hardware, but do not fully tighten.



Step 7

Place the side bar onto the brackets and secure using four M10 hex bolts, flat washers and lock washers.

Adjust and level the side bar.

With the side bar in position, it is recommended to tighten all brackets to the vehicle first, followed by the side bar connections.

Step 8

Repeat this process on the passenger side of the vehicle.

Congratulations on the installation of your new ARIES 3" round side bars.

With the side bars installed, periodic inspections should be performed to ensure all mounting hardware remains tight.

To protect your investment, see the 'Notes and Maintenance' section on the first page of this instruction manual.