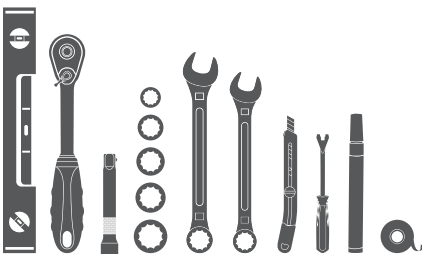


Parts List

1	Bull bar
2	Upper frame mounting bracket
1	Driver / left lower frame mounting bracket
1	Passenger / left lower frame mounting bracket
1	Driver / left support bracket
1	Passenger / left support bracket
2	Hex bolt, M12 - 1.50mm x 35mm
4	Hex bolt, M12 - 1.75mm x 35mm
14	Flat washer, 12mm
10	Lock washer, 12mm
8	Hex nut, 12mm
2	Hex bolt, 10mm
2	Lock washer, 10mm
4	Flat washer, 10mm
2	Hex nut, 10mm
2	Button head bolt, 5mm
4	Flat washer, 5mm
2	Nylock hex nut, 5mm

Tools Required

Ratchet	Extension
Socket, 10mm	Socket, 16mm
Socket, 18mm	Socket, 19mm
Socket, 21mm	Level
Utility knife	Trim removal tool
Wrench, 16mm	Wrench, 18mm
Paint pen	Tape



Level of Difficulty

Easy



Scan for helpful install tips

Product Image



Notes and Maintenance

Before you begin installation, read all instructions thoroughly.

Proper tools will improve the quality of installation and reduce the time required.

To protect the product, wax after installing. Regular waxing is recommended to add a protective layer over the finish. Do not use any type of polish or wax that may contain abrasives that could damage the finish.

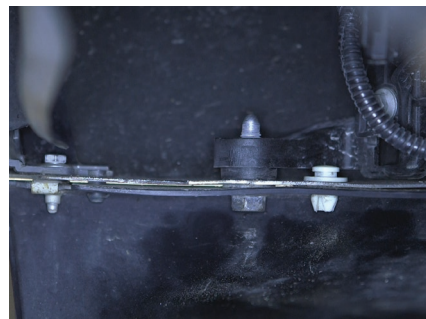
For stainless steel, polish may be used to clear small scratches and scuffs on the finish. Mild soap may be used also to clean the product.

Step 1

Carefully remove the plastic splash guard attached to the bottom of the front bumper.

Depending on the model of the truck, the splash guard will be attached using a combination of two-piece plastic push fasteners, rivets or hex bolts.

Be sure to keep all hardware for later reinstallation.



If the vehicle does not have tow hooks, skip to Step 3A

Step 2A - Vehicle with Tow Hooks

Starting on the driver side of the vehicle, remove the two hex nuts holding the front of the tow hooks in place.

Attach the lower mounting bracket to the bumper bolts using the previously removed hex bolts.



Step 2B - Vehicle with Tow Hooks

Loosen the rear mounting bolt on the tow hook and slide the slotted end of the mounting bracket behind the bolt.

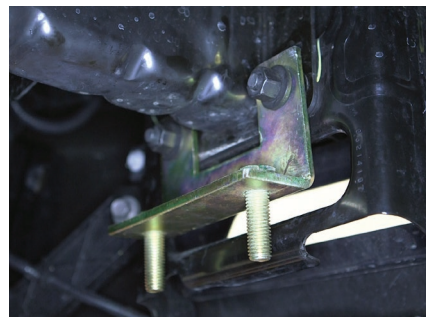
Snug the hardware, but do not fully tighten.



Step 3A - Vehicle without Tow Hooks

Starting on the driver side, remove the two hex nuts from the lower factory bumper bolts.

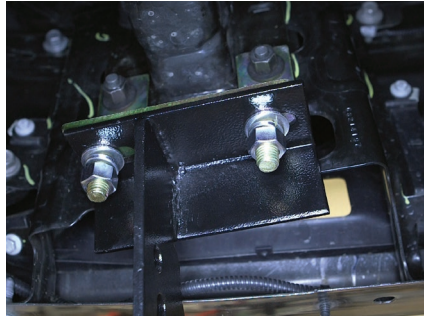
Insert one upper frame bracket and secure it with the previously removed hex nuts.



Step 3B - Vehicle without Tow Hooks

Attach the driver side lower frame mounting bracket to the upper frame mounting bracket using 12mm hex nuts, flat washers and lock washers.

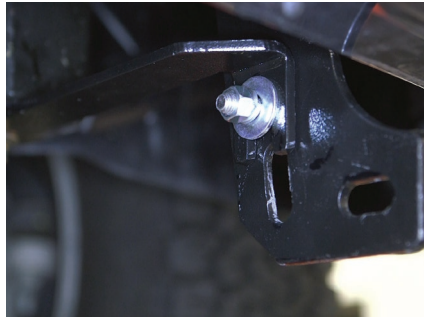
Install the non-slotted end of the support bracket to the frame using a 12mm fine thread hex bolt, lock washer and flat washer.



Step 3C - Vehicle without Tow Hooks

Attach the slotted end to the upper hole on the lower mount using a 10mm hex bolt, flat washer, lock washer and hex nut.

Repeat this steps 3A through 3C to install the passenger side mounting and support brackets.



Step 4

With help, lift the bull bar into place and align the mounting tabs on the bull bar with the inside of the mounting brackets.

Secure the bull bar using a 10mm hex bolt and flat washer on the outside and a flat washer, lock washer and hex nut on the inside for both the front and rear mounting points on the mounting bracket.



Step 5

Repeat step 4 to attach the passenger side of the bull bar to the passenger side mounting bracket.

Check that the bull bar is centered and level on the vehicle.

Tighten all hardware securing the mounting brackets to the vehicle. Do not tighten the hardware on the bull bar.

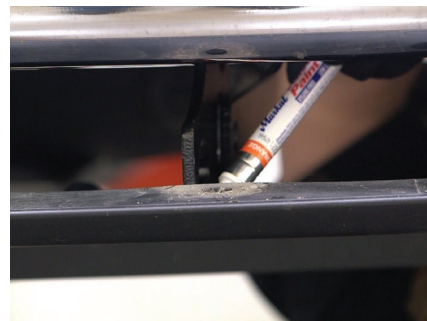


Step 6

To reinstall the splash guard, begin by unfastening and removing the bull bar from the vehicle.

Hold up the splash guard to the front bumper and align it with the mounting points.

Mark the locations of the mounting brackets on the splash guard, using a paint pen and tape.



Step 7

With the locations marked, cut two slots large enough to clear the mounting brackets.

The cut areas will be approximately 1/2" wide by 4" long. The size of the cut will vary due to different designs of splash guards and front bumper covers.



Step 8

Once cut, reinstall the splash guard to the front bumper using the factory hardware.

With help, reinstall the bull bar on the vehicle.



Step 9

Level and adjust the bull bar into the desired position and tighten all hardware.

Congratulations on the installation of your new ARIES 3" bull bar.

With the bull bar installed, periodic inspections should be performed to ensure all mounting hardware remains tight.

To protect your investment, we recommend applying a layer of nonabrasive wax.

