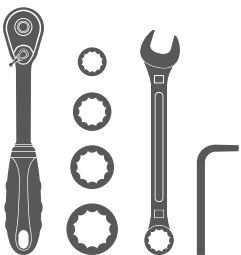


Parts List

1	Grille guard
1	Driver / left frame bracket
1	Passenger / right frame bracket
1	Driver / left outer top bracket
1	Passenger / right outer top brkt.
1	Driver / left mounting bracket
1	Passenger / right mounting brkt.
1	Driver / left inner top bracket
1	Passenger / right inner top brkt.
2	Top support U-bracket
1	LED support flange
4	Hex bolt, 6mm
4	Flat washer, 6mm
4	Lock washer, 6mm
6	Hex bolt, 8mm
2	Button head bolt, 8mm
2	Clip nut, 8mm
14	Flat washer, 8mm
2	Lock washer, 8mm
6	Nylock nut, 8mm
8	Button head bolt, 10mm
16	Flat washer, 10mm
8	Nylock nut, 10mm
4	Bolt plate, 12mm
4	Flat washer, 12mm
4	Nylock nut, 12mm

Tools Required

Ratchet	Wrench, 19mm
Socket, 10mm	Socket, 13mm
Socket, 17mm	Socket, 19mm
Allen wrench, 6mm	



Level of Difficulty

Easy



Scan for helpful install tips

Product Image



Notes and Maintenance

Before you begin installation, read all instructions thoroughly.

Proper tools will improve the quality of installation and reduce the time required.

For black finishes, mild soap may be used to clean the product.

Step 1

Select an LED light, mounting hardware and brackets (sold separately). Attach the hardware to the support flange.

Note: LED manufactures may have different mounting styles or brackets. Once the mounting option is determined, attach it to the support flange.



Step 2

With the LED light attached to the support flange, place a clip nut on both ends of the support flange.

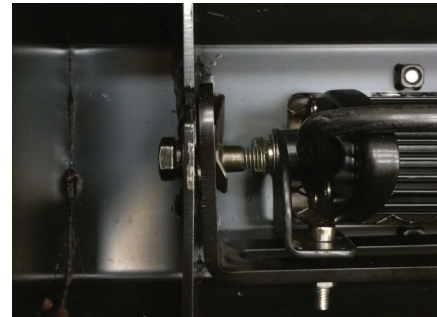
Insert an 8mm hex bolt, lock washer and flat washer into the clip nut. Leave enough space between the flat washer and clip nut to slot the support flange into the light bar cage on the grille guard.



Step 3

Place the grille guard face down on a flat, stable work surface.

Insert the support flange into the light bar cage on the grille guard and ensure the flat washer, lock washer and head of the hex bolt are on the outside of the center flange.



Step 4

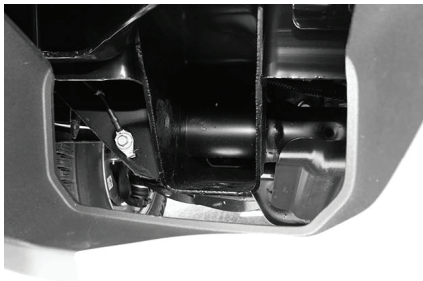
On the front end of the vehicle, locate the mounting points.



Step 5 - For vehicle with factory tow hooks

Remove the factory tow hooks from the end of each frame channel.

Note: Tow hooks cannot be reinstalled with the grille guard mounting brackets.



Step 6 - For vehicle without factory tow hooks

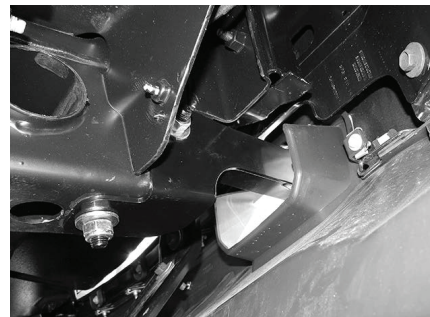
Cut out the indented area on the driver and passenger side of the plastic bumper.



Step 7

Starting on the passenger-side, insert a 12mm bolt plate into the bottom frame hole and outer frame hole.

Place the passenger side frame bracket up to the frame and secure using a 12mm flat washer and 12mm nylock nut on both mounting points.



Step 8

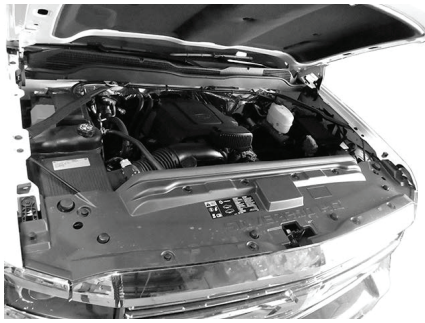
Locate and attach the passenger mounting bracket to the frame bracket using two 10mm button head bolts and two 10mm flat washers on the top and two 10mm flat washers, two 10mm lock washers and two 10mm nylock nuts on the bottom.

Snug the hardware, but do not fully tighten.



Step 9

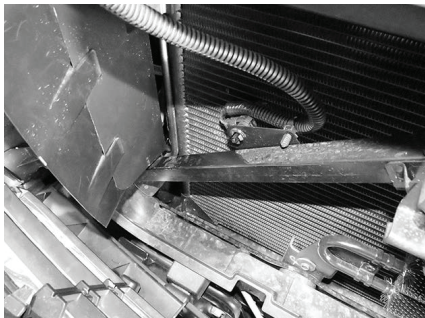
Open the hood of the vehicle and remove the plastic cover on top of the grille and radiator.



Step 10

Remove the hardware securing the grille to the vehicle.

Carefully pull it straight out from the vehicle, tilting the grille forward to access the area behind the grille.



Step 11

Place the U-bracket around the square tube support.

Place the passenger inner bracket up to the square tube support, aligning the mounting holes on the inner bracket and the U-bracket.

Secure the brackets to the square tube support using two 6mm hex bolts, two 6mm lock washers and two 6mm flat washers.



Step 12

Insert the passenger outer top bracket through the grille and on top of the inner bracket.

Secure the outer top bracket to the inner bracket using two 8mm hex bolts and two 8mm flat washers on top and two 8mm flat washers and two nylock nuts on the bottom of the brackets.

Repeat process on the driver side.



Step 13

With help, line up the mounting holes on the grille guard with the mounting holes on the mounting brackets.

Secure the grille guard to the passenger-side mounting brackets using two 10mm button head bolts and two 10mm flat washers on the outside and two 10mm flat washers and two 10mm nylock nuts on the inside.

Repeat process on the driver side.



Step 14

Secure the passenger-side top mounting bracket to the grille guard using an 8mm button head bolt on the outside and an 8mm flat washer and 8mm nylock nut on the inside of the grille guard.

Repeat process for the driver side.



Step 15

Once the grille guard is aligned, tighten all hardware.

Congratulations on the installation of your new ARIES Pro Series™ grille guard.

With the grille guard installed, periodic inspections should be performed to ensure all mounting hardware remains tight.

To protect your investment, see the 'Notes and Maintenance' section on the first page of this instruction manual.



Parts List

1	LED light bar, 10"
1	Mounting bracket, left
1	Mounting bracket, right
1	Wiring harness
2	Security screw, M6 - 1.0 x 25mm
2	Rubber spacer, M6
2	Flat washer, M6
2	Hex head cap screw, M8 - 1.25 x 18mm
2	Flat washer, M8
2	Nylock nut, M8 -1.25mm
1	Security screw L-wrench
1	15-amp fuse, pre-installed

Step 1

Mount the LED light in the desired location with a rubber spacer between the mounting surface and each bracket.

Note: If this light bar is being used with a 24V system, the relay will need to be replaced with a 24V unit.

Disconnect the supplied switch from the wiring harness and install in the desired location.

Step 2

Once the LED light bar and switch are installed, route the wiring harness to the light. Insert the male plug on the wiring harness into the female socket on the LED light. Reconnect the blue, red and black spade connectors to the switch (see the wiring diagram).

Step 3

Connect the red fused wire with the ring terminal to the positive (+) battery post. Connect the black wire ring terminal to the negative (-) battery post or other suitable vehicle grounding point.

Step 4

Mount the provided relay to the vehicle and secure all wires with zip ties away from moving parts to avoid damage. Test the light to ensure proper function.

Level of Difficulty

Easy

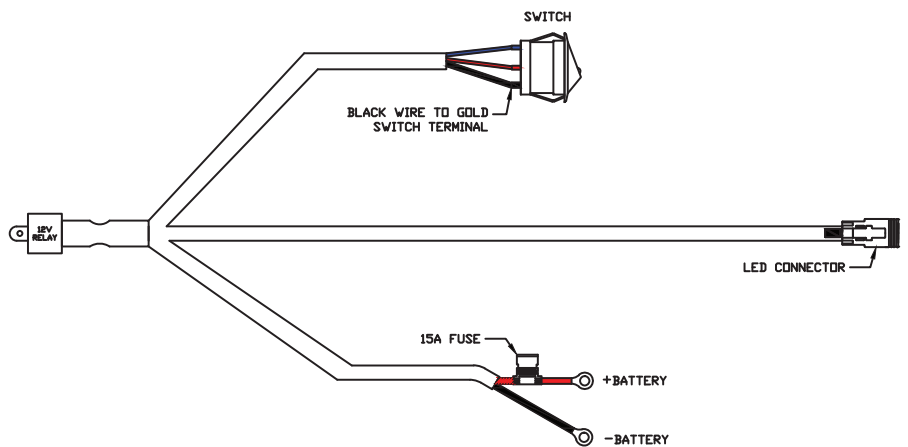


Scan for helpful install tips

Product Image



Wiring Diagram



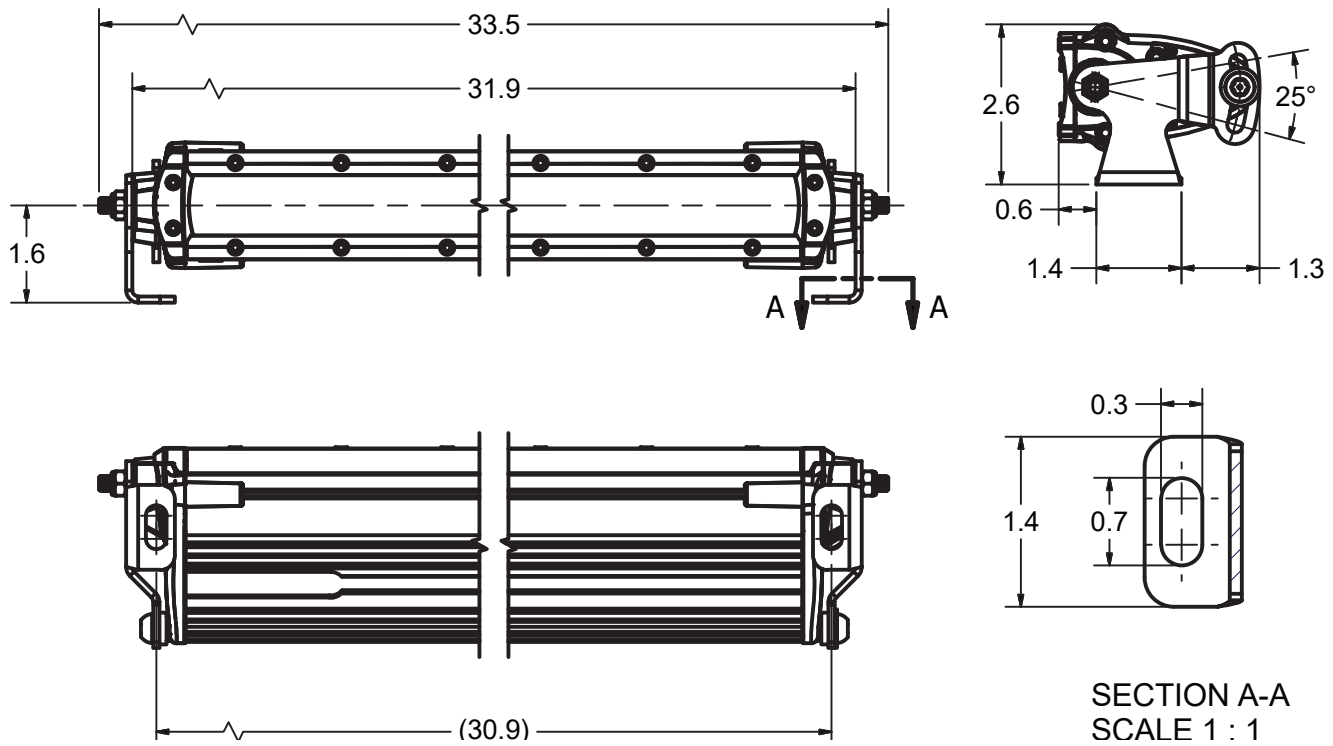
Notes and Maintenance

Before you begin installation, read all instructions thoroughly.

Periodic inspection of all wires and connections should be performed to ensure there is no visible damage or loose connections.

WARNING: Improper electrical installation may damage electronic components resulting in personal injury, property or equipment damage. Damaged caused by incorrect installation is not covered by warranty. Installation should only be performed by qualified personnel with a solid understanding of electrical systems.

Basic Dimensions



Mounting Illustration

