

INSTALLATION MANUAL

2157002

Level of Difficulty

Moderate

Parts List

1	TrailCrusher™ bumper
1	Driver / left side bracket
1	Passenger / right side bracket
1	License plate bracket
1	Bolt plate
8	Bolt retainer
6	Button head cap screw, M6
6	Lock nut, M6
10	Carriage bolt, M12
10	Flange nut, M12
2	Cable tie

Tools Required

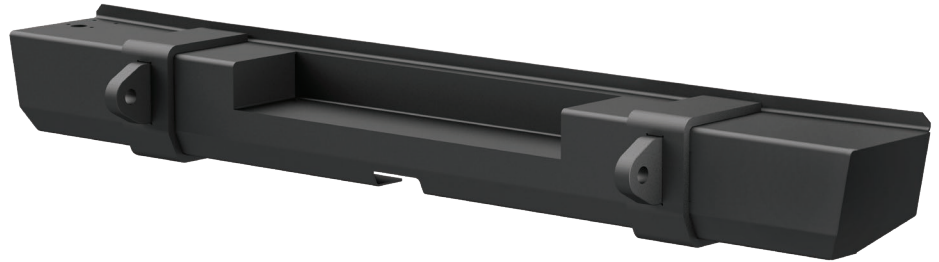
Torque wrench	Ratchet
Socket set	Level
Wrench set	Hex key set
Small screw driver	--

Torque Specifications

M12 bolt	58 ft-lbs.
M14 bolt	93 ft-lbs.

Use above torque setting unless otherwise noted

Product Photo



Brackets and Hardware



Driver / left side bracket



Passenger / right side bracket

Notes and Maintenance

Before you begin installation, read all instructions thoroughly.

Proper tools will improve the quality of installation and reduce the time required.

To protect the product, wax after installing. Regular waxing is recommended to add a protective layer over the finish. Do not use any type of polish or wax that may contain abrasives that could damage the finish.

For polished, gloss and other smooth finishes, polish may be used to clear small scratches and scuffs on the finish.

Mild automotive detergent may be used to clean the product. Do not use dish detergent, abrasive cleaners, abrasive pads, wire brushes or other similar products that may damage the finish.

Refer to the table to the left when securing hardware during the installation process to help prevent damage to the product or vehicle.

Product Registration

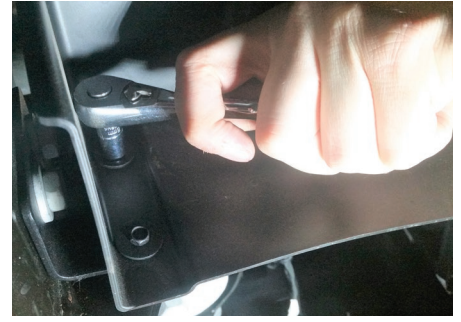
CURT Group stands behind our products with industry leading warranties. You can help us continue to improve our product line and help us understand your needs by registering your purchase by visiting:

warranty.curtgroup.com/surveys

At CURT Group, customer is king. We value your feedback and we use that information to make improvements on our products. Please, take a minute and let us know how we are doing.

Step 1

Remove the factory mud guards on each side of the Jeep by removing the three bolts securing each mud guard in place.



Step 2

Remove the side braces on each side of the Jeep by removing the four bolts securing each side brace in place.

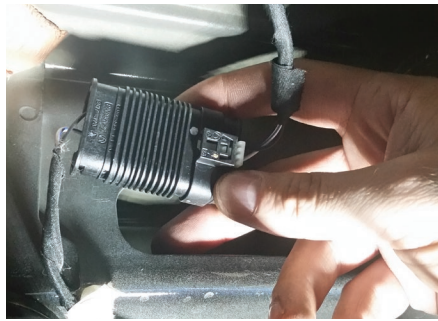


Step 3

Disconnect the wiring harness for the license plate light from the body of the Jeep.

Separate the connector from the wiring harness. A small screw driver may be needed to separate the connector.

Note: The bumper does not accommodate rear backup sensors.

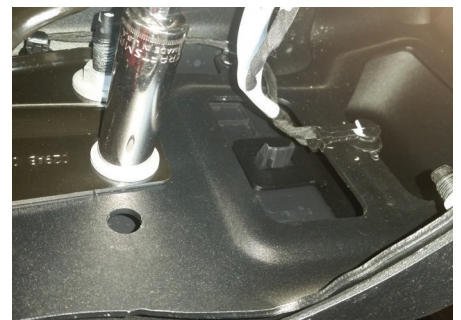


Step 4

Remove the four bolts securing the tow hook on the driver side. The tow hook will not be reinstalled.

Remove the two large bolts on the passenger side frame. **Note:** The six large bolts from the tow hook and the frame will be re-used for the bumper installation.

Remove the two nuts securing the bracket to the bumper. Repeat on the passenger side.



Step 5

Remove the two bolts securing the cross member to the bottom of the bumper.

With assistance, remove the bumper from the Jeep.



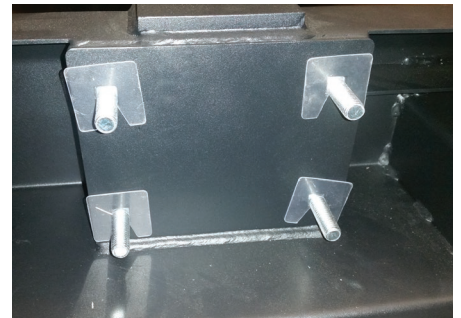
Step 6

Remove the license plate light, nuts and harness. Set aside for use in the installation of the new bumper.



Step 7

Place eight M12 carriage bolts into the new bumper and secure with bolt retainers.



Step 8

Using the four factory bolts removed from the factory tow hook, fasten the driver-side bracket to the driver-side frame end.

Snug the fasteners, but do not fully tighten.

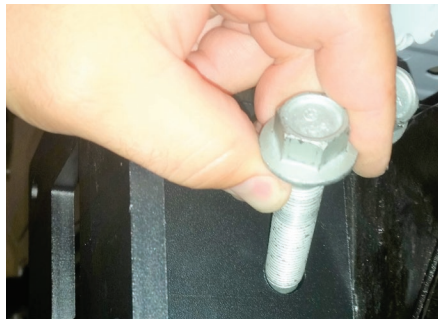


Step 9

On the passenger side, attach the passenger-side bracket with the two factory bolts on the side of the bracket.

Snug the fasteners, but do not fully tighten.

Place the provided bolt plate on the inside of the frame end and center over the two bottom holes.



Step 10

Place two M12 carriage bolts through the bolt plate and down through the frame. Secure with two M12 flange nuts.

Snug the fasteners, but do not fully tighten.



Step 11

With assistance, slide the bumper with the carriage bolts in place onto the brackets installed on the Jeep frame.

Make sure all eight carriage bolts go through the slots in the passenger- and driver-side brackets.

Secure the eight carriage bolts with M12 flange nuts. Snug the hardware, but do not tighten.



Step 12

At this time, adjust the bumper to its desired location.

Tighten the lower bolts on the driver-side bracket and the two lower flange nuts on the passenger-side bracket first.

Note: M12 fasteners should be torqued to 58 ft-lbs. M14 fasteners should be torqued to 93 ft-lbs.

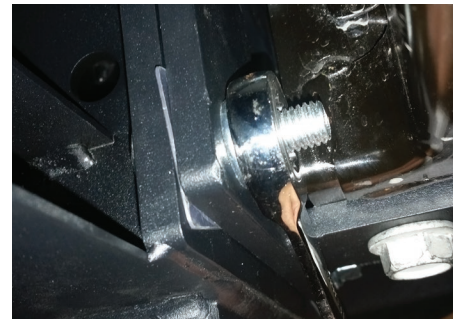


Step 13

Tighten the bolts on the side of the driver- and passenger-side brackets.

Tighten the carriage bolts and nuts securing the bumper to the driver- and passenger-side brackets.

Note: M12 fasteners should be torqued to 58 ft-lbs. M14 fasteners should be torqued to 93 ft-lbs.



Step 14

Route the factory wiring harness for the license plate light through the large hole on the driver side of the bumper.

Connect the wiring harness and place the light into the matching holes on the bumper.



Step 15

Attach the license plate light on the driver side of the bumper using the factory nuts.



Step 16

Fasten the license plate to the license plate bracket using four M6 button head cap screws and lock nuts. Once all four fasteners have been started, tighten them all.



Step 17

Attach the license plate bracket to the bumper using two M6 button head cap screws and two lock nuts.

Tighten the two M6 button head screws securing the license plate bracket to the bumper.



Step 18

Reconnect the wiring harness and test the function of the license plate light.

Use the provided cable ties to fasten any loose wiring to the body of the Jeep.



Step 19

With the bumper installed, periodic inspections should be performed to ensure all mounting hardware remains tight.

To protect your investment, see the 'Notes and Maintenance' section on the first page of this instruction manual.

Congratulations on the installation of your new ARIES TrailCrusher™ bumper.

