

# INSTALLATION MANUAL

## 2157000

### Level of Difficulty

Moderate

### Parts List

1	TrailCrusher™ bumper
2	C-channel bracket
4	Hex bolt, M10 x 35mm
4	Flat washer, M10
4	Lock washer, M10
4	Hex bolt, M14 x 40mm
4	Flat washer, M14
4	Lock washer, M14

### Tools Required

Torque wrench	Ratchet
Socket set	Level

### Torque Specifications

Metric	Bolt	Torque
	M6 bolt	7 ft-lbs.
	M8 bolt	16 ft-lbs.
	M10 bolt	40 ft-lbs.
	M12 bolt	58 ft-lbs.
	M14 bolt	134 ft-lbs.

Use above torque setting unless otherwise noted

### Product Photo



### Notes and Maintenance

Before you begin installation, read all instructions thoroughly.

Proper tools will improve the quality of installation and reduce the time required.

To protect the product, wax after installing. Regular waxing is recommended to add a protective layer over the finish. Do not use any type of polish or wax that may contain abrasives that could damage the finish.

For polished, gloss and other smooth finishes, polish may be used to clear small scratches and scuffs on the finish.

Mild automotive detergent may be used to clean the product. Do not use dish detergent, abrasive cleaners, abrasive pads, wire brushes or other similar products that may damage the finish.

Refer to the table to the left when securing hardware during the installation process to help prevent damage to the product or vehicle.

### Step 1

Starting on the driver side, using a 16mm socket, remove the M10 bolts holding the corners of the factory bumper support bracket to the frame.



### Step 2

Remove the center bumper bolts holding the Z-shaped brackets to the frame.

Repeat this step for the passenger side.



### Step 3

With the brackets removed, lift the bumper off the frame rails and set it aside.

Using an 18mm socket, remove the bolts holding the stock tow hooks to the frame. These will not be reinstalled.

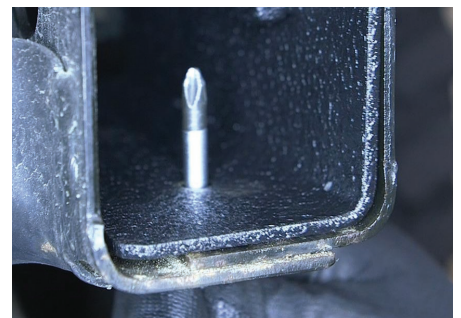


### Step 4

Take C-channel bracket and place it into the frame of the Jeep.

If necessary, move the C-channel into place with a screwdriver, as shown.

Repeat this step for the passenger side.



### Step 5

With help, lift the new bumper over the frame rails.



### Step 6

With bumper in place, secure using M14 hex bolts, lock washers and flat washers.

Snug with an 22mm socket, but do not fully tighten.

Repeat this step for the passenger side.



### Step 7

Secure the bumper to the vehicle with M10 hex bolts, lock washers and flat washers.

Snug with a 17mm socket, but do not fully tighten. Repeat this step for the passenger side.



### Step 8

Check to make sure the bumper is level. Adjust if necessary and fully tighten all hardware.

Torque M14 bolts to 134 ft-lbs.  
Torque M10 bolts to 40 ft-lbs.

With the bumper installed, periodic inspections should be performed to ensure all mounting hardware remains tight.

To protect your investment, see the 'Notes and Maintenance' section on the first page of this instruction manual.

Congratulations on the installation of your new ARIES TrailCrusher™ bumper.

