



# INSTALLATION MANUAL

## Parts List

1	Bull bar
2	Upper frame mounting bracket
1	Driver / left lower frame mounting bracket
1	Passenger / right lower frame mounting bracket
2	Button head bolt, 6mm
4	Flat washer, 6mm
2	Nylock nut, 6mm
4	Hex bolt, M8
4	Flat washer, M8
4	Nylock nut, M8
4	Hex bolt, M10
8	Flat washer, M10
4	Nylock nut, M10
4	Hex bolt, M12
8	Flat washer, M12
4	Lock washer, M12
4	Hex nut, M12
1*	LED wiring harness*

\* Wiring harness only included with LED equipped models

## Level of Difficulty

Easy

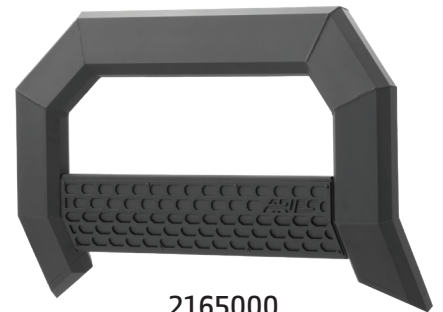


Scan for helpful install tips

## Product Image



2155000



2165000



2155100



2165100

## Tools Required

Ratchet	Socket, 13mm
Torque wrench	Socket, 18mm
Utility knife	Wrench, 16mm
Level	Wrench, 19mm
Paint pen	Tape

## Torque Specifications

<b>METRIC</b>	M6 bolt	3 ft.-lbs.
	M8 bolt	7 ft.-lbs.
	M10 bolt	16 ft.-lbs.
	M12 bolt	28 ft.-lbs.
<b>SAE</b>	1/4" bolt	3 ft.-lbs.
	5/16" bolt	7 ft.-lbs.
	3/8" bolt	16 ft.-lbs.
	7/16" bolt	20 ft.-lbs.
	1/2" bolt	28 ft.-lbs.

## Notes and Maintenance

Before you begin installation, read all instructions thoroughly.

Proper tools will improve the quality of installation and reduce the time required.

For chrome powder coat, polish may be used to clear small scratches and scuffs on the finish. Mild soap may be used also to clean the product.

For black finishes, mild soap may be used to clean the product.

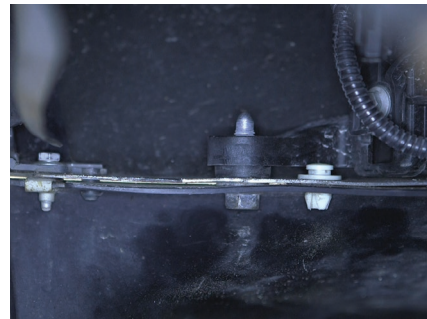
Refer to the table to the left when securing hardware during the installation process to help prevent damage to the product or vehicle.

### Step 1

Carefully remove the plastic splash guard attached to the bottom of the front bumper.

Depending on the model of the truck, the splash guard will be attached using a combination of two-piece plastic push fasteners, rivets or hex bolts.

Be sure to keep all hardware for later reinstallation.



### Step 2

Starting on the driver side, remove the two hex nuts from the lower factory bumper bolts.

Insert one upper frame bracket and secure it with the previously removed hex nuts.



### Step 3

Attach the driver-side lower frame mounting bracket to the upper frame mounting bracket using M12 hex bolts, flat washers, lock washers and hex nuts.



### Step 4

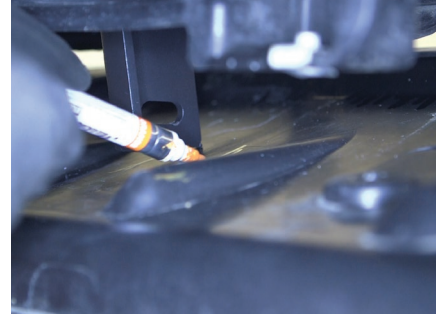
Repeat steps 2 and 3 to install the passenger-side mounting brackets.



### Step 5

To reinstall the splash guard, hold up the splash guard to the front bumper and align it with the mounting points.

Mark the locations of the mounting brackets on the splash guard, using a paint pen and tape.



### Step 6

With the locations marked, cut two slots large enough to clear the mounting brackets.

After cutting the mounting bracket slots, reinstall the splash guard.

**Note:** If rivets were removed in step 1, reattach these locations with the provided 6mm button heads, flat washers and nylock nuts.



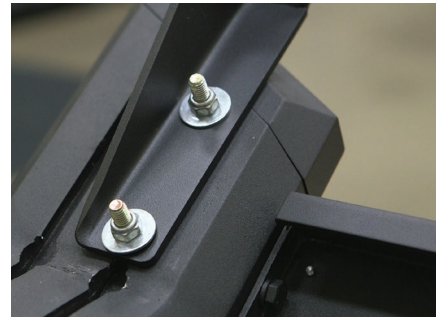
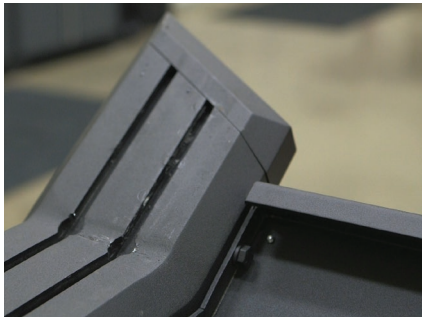
### Step 7

To attach the bull bar mounting brackets, lay the bull bar on a flat surface. Insert two M8 hex bolts into the inner rail slot.

Place the driver-side bracket over the bolts and secure the bracket to the bull bar using two M8 flat washers and M8 nylock nuts.

Snug the hardware, but do not fully tighten.

Repeat this step for the passenger-side bracket.



### Step 8

With help, lift the bull bar into place and align the mounting tabs on the outside of the mounting brackets.



### Step 9

Insert a M10 hex bolt with flat washer on the outside of the lower mounting point of the bracket and a M10 flat washer and nylock nut on the inside.

Snug the hardware, but do not fully tighten.



### Step 10

Repeat step 9 to finish securing the bull bar mounting bracket to the lower frame mounting bracket.

Repeat this process for all mounting locations.

Level and adjust the bull bar into the desired position and tighten all hardware.

Tighten all hardware to the recommended torque specifications listed in the table on the first page.

If your bull bar is not equipped with lights skip to step 13.

If your bull bar is equipped with lights complete steps 11 and 12.

**Note:** If the LED lights are being used with a 24V system, the 12V relay will need to be replaced with a 24V unit.



### Step 11 - For Models with LED Lights Included

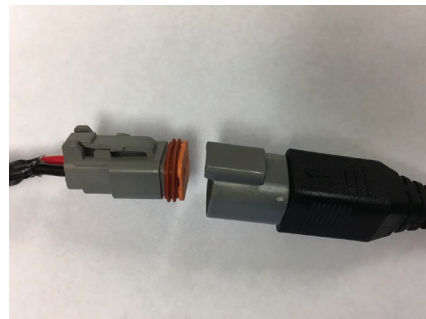
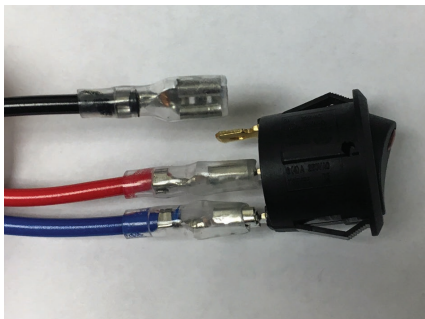
Disconnect the supplied switch from the wire harness and install in desired location.

With the switch installed, route the wire harness to the LED lights and the switch.

Reconnect the blue, red and black spade connectors to the switch as shown.

**Note:** The black wire connects to the gold switch terminal.

Plug the male connector on the wire harness into the female connector attached to the LED lights.



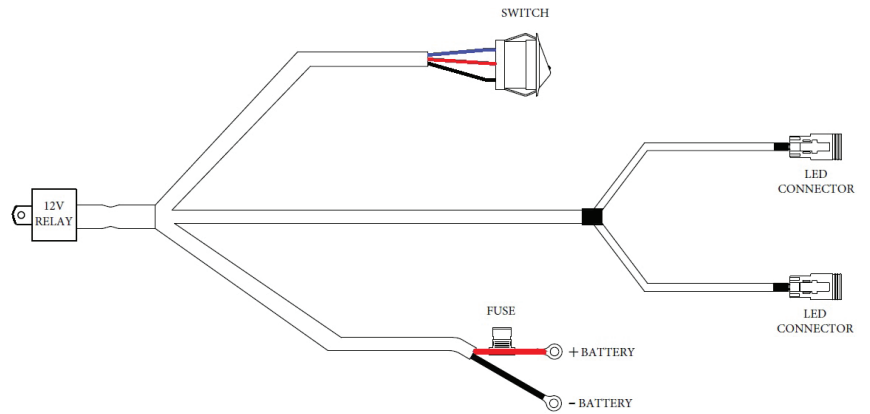
### Step 12 - For Models with LED Lights Included

Connect the red fused wire with the ring terminal to the positive battery post.

Connect the black wire ring terminal to the negative battery post or other suitable vehicle grounding point.

Mount the supplied relay to the vehicle and secure all wires with zip ties away from moving parts to avoid damage.

Test the lights to ensure proper function.



### Step 13

Congratulations on the installation of your new ARIES AdvantEDGE™ bull bar.

With the bull bar installed, periodic inspections should be performed to ensure all mounting hardware remains tight.

To protect your investment, see the 'Notes and Maintenance' section on the first page of this instruction manual.

