

Parts List

1	Driver / left rocker step
1	Passenger / left rocker step
8	Clip nut, M8
8	Hex bolt, M8 - 1.50 x 30mm
4	Bolt plate, M8
12	Flat washer, M8
12	Lock washer, M8
4	Hex nut, M8
4	Bolt retainer, plastic

Tools Required

Ratchet	Torque wrench
Socket, 13mm	Level
Flathead screwdriver	

Torque Specifications

	Torque Specifications	
METRIC	M6 bolt	3 ft.-lbs.
	M8 bolt	7 ft.-lbs.
	M10 bolt	16 ft.-lbs.
	M12 bolt	28 ft.-lbs.
SAE	1/4" bolt	3 ft.-lbs.
	5/16" bolt	7 ft.-lbs.
	3/8" bolt	16 ft.-lbs.
	7/16" bolt	20 ft.-lbs.
	1/2" bolt	28 ft.-lbs.

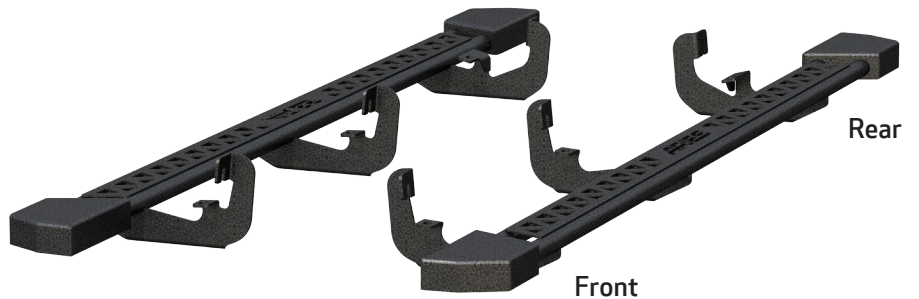
Level of Difficulty

Easy



Scan for helpful install tips

Product Image



Notes and Maintenance

Before you begin installation, read all instructions thoroughly.

Proper tools will improve the quality of installation and reduce the time required.

To protect the product, wax after installing. Regular waxing is recommended to add a protective layer over the finish. Do not use any type of polish or wax that may contain abrasives that could damage the finish.

For black finishes, mild soap may be used to clean the product.

Refer to the table to the left when securing hardware during the installation process to help prevent damage to the product or vehicle.

Step 1

Starting on the driver side, locate the three mounting locations underneath the vehicle.



Step 2

Remove the two hole plugs.

Insert a clip nut through the access hole and align it over the adjacent smaller hole. Insert a second clip nut over the lower mounting tab.

Repeat this step for the middle mounting location.



Step 3

Locate and remove the two hole plugs located along the edge of the vehicle and on the inner rocker panel.

Insert an M8 bolt into each mounting hole. Slide a plastic bolt retainer over the thread of each bolt to hold the bolt in place.

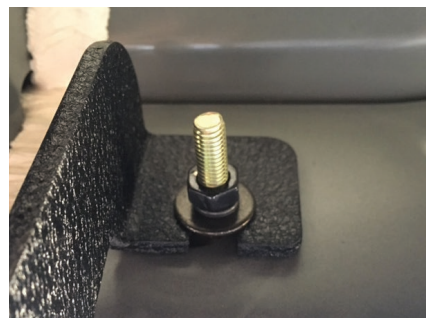
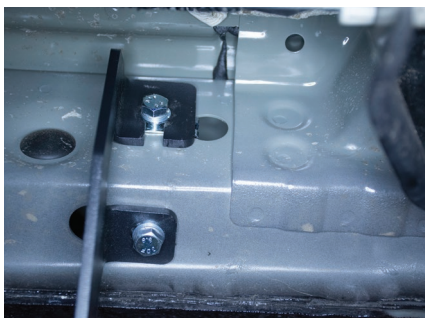


Step 4

With help, lift the rocker step into position and align the brackets on the rocker step with the mounting points on the vehicle.

Secure the front and middle mounting brackets with two M8 hex bolts, two lock washers and two flat washers. Secure the rear mounting bracket with two M8 hex nuts, two lock washers and two flat washers.

Tighten all hardware to the recommended torque specifications listed in the table on the first page.



Step 5

Repeat steps 1 through 3 on the passenger side of the vehicle.

Congratulations on the installation of your new ARIES rocker steps.

With the rocker steps installed, periodic inspections should be performed to ensure all mounting hardware remains tight.

To protect your investment, see the 'Notes and Maintenance' section on the first page of this instruction manual.

