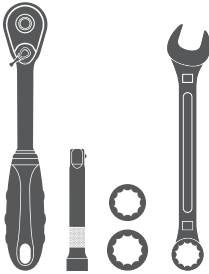


Parts List

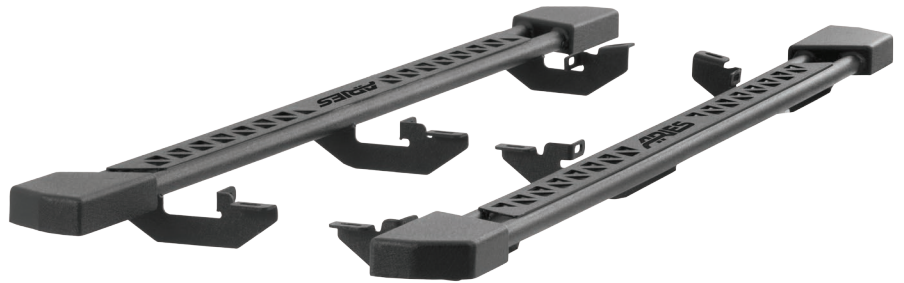
1	Driver / left rocker step
1	Passenger / left rocker step
6	Hex bolt, 6mm
12	Flat washer, 6mm
6	Nylock nut, 6mm
6	Hex bolt, 8mm
6	Lock washer, 8mm
6	Flat washer, 8mm
4	Clip nut, M8

Tools Required

Ratchet	Extension
Socket, 10mm	Socket, 13mm
Wrench, 10mm	

**Level of Difficulty**

Easy

Scan
for helpful
install tips**Product Image****Notes and Maintenance**

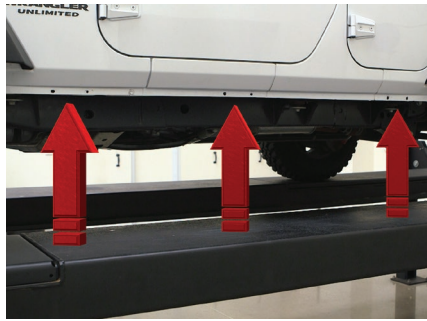
Before you begin installation, read all instructions thoroughly.

Proper tools will improve the quality of installation and reduce the time required.

For black finishes, mild soap may be used to clean the product.

Step 1

Locate the three mounting points along the bottom edge of the vehicle body.



Step 2

Starting on the driver-side front mounting location, locate the factory-threaded hole on the vehicle frame.

For vehicles without factory-threaded holes, slide a bolt plate up through the square slot and position the bolt plate over the circular hole.



Step 3

With help, lift the rocker step into position and align the brackets on the rocker step with the mounting points on the vehicle.



Step 4

Secure the rocker step rear attachment point with an 8mm hex bolt, lock washer and flat washer using the factory-threaded hole.

Secure the rocker step front attachment point by inserting a 6mm hex bolt and flat washer on the outside, along with a flat washer and nylon lock nut on the inside.



Step 5

Repeat step 4 for the rear attachment point to finish the installation process for the driver side rocker step.

Tighten all hardware on the step and brackets.



Step 6

Repeat steps 1 through 5 on the passenger side of the vehicle.

Congratulations on the installation of your new ARIES rocker steps.

With the rocker steps installed, periodic inspections should be performed to ensure all mounting hardware remains tight.

