

INSTALLATION MANUAL

2072102**Level of Difficulty**

Moderate

Parts List

1	Winch support bracket
4	Carriage bolt, M10
4	Flat washer, M10
4	Lock washer, M10
4	Square hole spacer
4	Hex nut, M10

Tools Required

Ratchet	Level
Socket set	--

Torque Specifications

M10 bolt	25 ft-lbs.
M12 bolt	45 ft-lbs.

Use above torque setting unless otherwise noted

Product Photo**Notes and Maintenance**

Before you begin installation, read all instructions thoroughly.

Proper tools will improve the quality of installation and reduce the time required.

To protect the product, wax after installing. Regular waxing is recommended to add a protective layer over the finish. Do not use any type of polish or wax that may contain abrasives that could damage the finish.

For polished, gloss and other smooth finishes, polish may be used to clear small scratches and scuffs on the finish.

Mild automotive detergent may be used to clean the product. Do not use dish detergent, abrasive cleaners, abrasive pads, wire brushes or other similar products that may damage the finish.

Refer to the table to the left when securing hardware during the installation process to help prevent damage to the product or vehicle.

Product Registration

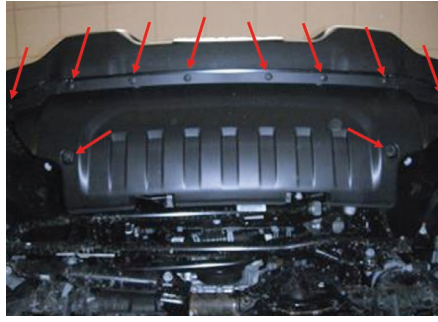
CURT Group stands behind our products with industry leading warranties. You can help us continue to improve our product line and help us understand your needs by registering your purchase by visiting:

warranty.curtgroup.com/surveys

At CURT Group, customer is king. We value your feedback and we use that information to make improvements on our products. Please, take a minute and let us know how we are doing.

Step 1

Remove the front fascia by removing the eight plastic push fasteners from the upper edge of the lower front fascia. Using a socket, remove the two 5mm screws securing the lower edge of the plastic fascia.



Step 2

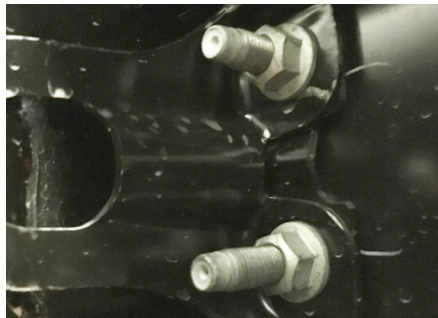
From behind the factory bumper on the passenger side, disconnect the fog light wiring harness.



Step 3

Remove the four nuts on the driver side securing the factory bumper in place.

Repeat this step on the passenger side.



Step 4

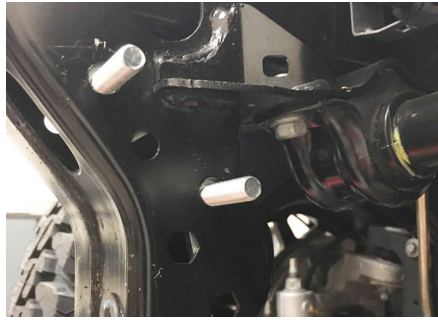
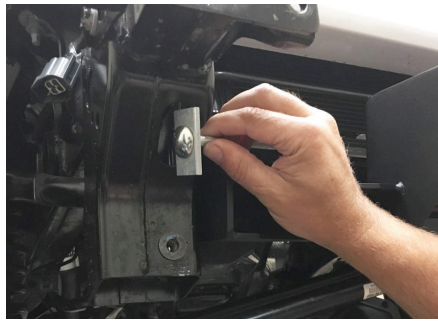
Once all of the bolts have been removed, carefully lift the factory bumper from the frame and set it on a flat work surface.



Step 5

On the driver side, insert two M10 carriage bolts with square hole spacers into the frame of the vehicle.

Repeat this step on the passenger side.



Step 6

With assistance, hold the ARIES winch support bracket in place.

Secure using an M10 flat washer, lock washer and hex nut in all four mounting locations.

Snug the hardware, but do not fully tighten.



Step 7

Level and adjust the ARIES winch support bracket to the desired position.

Tighten all of the hardware to the recommended torque specifications listed in the table on the first page.

Congratulations on the installation of your new ARIES winch support bracket.

With the winch support bracket installed, periodic inspections should be performed to ensure all mounting hardware remains tight.

To protect your investment, see the 'Notes and Maintenance' section on the first page of this instruction manual.

