

### Parts List

|   |                                      |
|---|--------------------------------------|
| 2 | Winch adapter plate                  |
| 4 | Hex head bolt,<br>M10 - 1.50 x 120mm |
| 8 | Flat washer, M10                     |
| 4 | Lock washer, M10                     |
| 4 | Hex nut, M10                         |
| 2 | Carriage bolt, M14 - 2 x 50mm        |
| 2 | Serrated flange nut, M14             |

This hardware is for a standard winch installation. Due to manufacturer deviation additional hardware may be required.

### Tools Required

|               |              |
|---------------|--------------|
| Torque wrench | Socket, 21mm |
| Socket, 17mm  |              |

### Torque Specifications

| METRIC   | Torque Specifications |             |
|----------|-----------------------|-------------|
|          | M6 bolt               | 3 ft.-lbs.  |
|          | M8 bolt               | 7 ft.-lbs.  |
|          | M10 bolt              | 16 ft.-lbs. |
| M12 bolt | 28 ft.-lbs.           |             |
| SAE      | 1/4" bolt             | 3 ft.-lbs.  |
|          | 5/16" bolt            | 7 ft.-lbs.  |
|          | 3/8" bolt             | 16 ft.-lbs. |
|          | 7/16" bolt            | 20 ft.-lbs. |
|          | 1/2" bolt             | 28 ft.-lbs. |

Use above torque setting unless otherwise noted

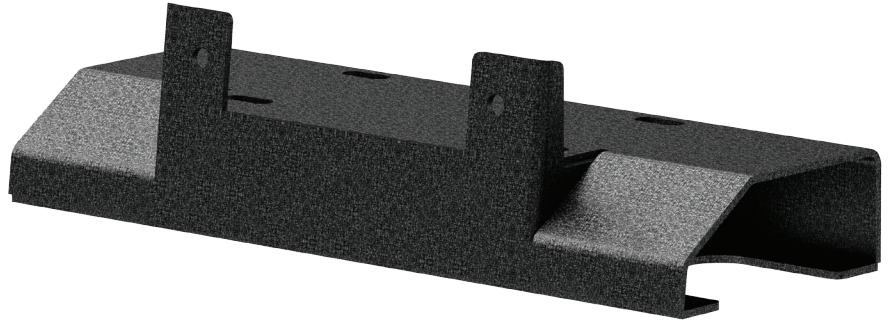
### Level of Difficulty

Easy



Scan for helpful install tips

### Product Image



### Notes and Maintenance

Before you begin installation, read all instructions thoroughly.

Proper tools will improve the quality of installation and reduce the time required.

For black finishes, mild soap may be used to clean the product.

Refer to the table to the left when securing hardware during the installation process to help prevent damage to the product or vehicle.

### Step 1

Place the winch adapter plate onto the slot in the bumper. Place the winch on the adapter.

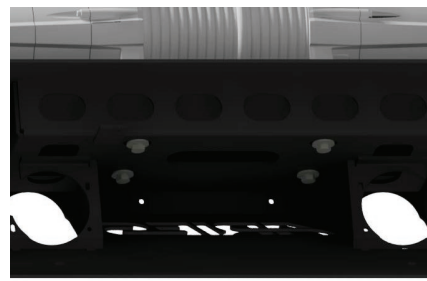
**Note:** If using the roller fairlead, this needs to be attached prior to the placement of the winch.



### Step 2

Attach the winch and adapter plate to the bumper using four M10 hex bolts, lock washers and flat washers. Run the bolts up into the winch from the inside of the bumper.

**Note:** Some winches may require additional mounting hardware.



### Step 3

The provided carriage bolts may need to be used for some installations or for use with ARIES #2072101 reinforcement bracket, because of clearance inside the bumper. If 14mm carriage bolts are used they can be tightened to 100 ft.-lbs



### Step 4

Torque hardware to the winch manufacturer's recommendations.

Congratulations on the installation of your new ARIES winch adapter plate.

