

# INSTALLATION MANUAL

## 2070465

ALC25000-01 &  
ALC25000-00

### Parts List

1	Cargo center lid with key
1	Passenger / right side plate
1	Driver / left side plate
1	Passenger / right side insert plate
1	Driver / left side insert plate
1	Back seat plate
1	Door latch bracket
1	Bottom cross bar
1	Rubber trim strip
6	Tie down bracket
1	Foam tape, 25mm x 3mm
1	Foam tape, 50mm x 6.5mm
1	Hex key, 2.5mm
8	Button head bolt, M4 x 10mm
8	Flat washer, M4
8	Lock washer, M4
1	Hex key, M5
15	Button head bolt, M8 x 25mm
6	Button head bolt, M8 x 35mm
2	Cap head square neck bolt, M8 x 45mm
21	Flat washer, M8
21	Lock washer, M8
6	Nut tab, M8
2	Hex nut, M8
12	Philips machine screw

### Level of Difficulty

Easy



Scan for helpful install tips

### Product Image



### Notes and Maintenance

Before you begin installation, read all instructions thoroughly.

Proper tools will improve the quality of installation and reduce the time required.

For black finishes, mild soap may be used to clean the product.

Refer to the table below when securing hardware during the installation process to help prevent damage to the product or vehicle.

### Tools Required

Ratchet	Extension
Allen wrench, 2.5mm	Wrench, 10mm
Allen wrench, 4mm	Socket, 18mm
Allen wrench, 5mm	Torx bit, T30
Utility Knife	Torx bit, T45
Scissors	Philips screwdriver
Marker	--

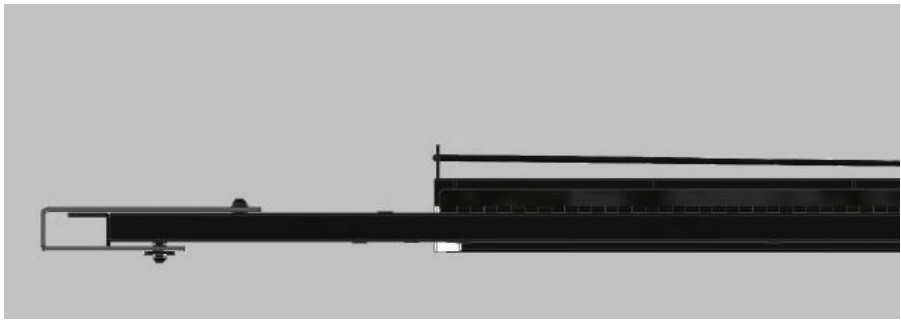
### Torque Specifications

<b>METRIC</b>	M6 bolt	3 ft.-lbs.
	M8 bolt	7 ft.-lbs.
	M10 bolt	16 ft.-lbs.
	M12 bolt	28 ft.-lbs.
<b>SAE</b>	1/4" bolt	3 ft.-lbs.
	5/16" bolt	7 ft.-lbs.
	3/8" bolt	16 ft.-lbs.
	7/16" bolt	20 ft.-lbs.
	1/2" bolt	28 ft.-lbs.

### Step 1

Begin by removing the two protective end caps, four M8 x 25mm button head bolts, four M8 lock washers and four M8 flat washers from the center section.

**Note:** Keep hardware on hand for reuse in step 9.



### Step 2

Refer to the owner's manual for removal of the hard / soft top.



### Step 3

Fold the rear seats down and locate the two M18 factory nuts.

Remove the factory nuts and place the bottom cross bar down. Secure the cross bar using the previously removed factory hex nuts.

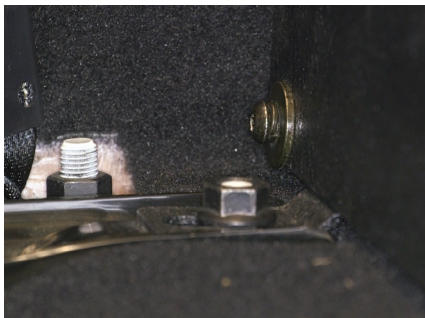
Snug the hardware, but do not fully tighten.



### Step 4

Attach the back seat plate to the cross bar using five M8 x 25mm button head bolts, five M8 flat washers and five M8 lock washers.

Snug the hardware, but do not fully tighten.



### Step 5

Locate the 50mm wide foam tape, fold it in half and cut.

Remove the adhesive cover and apply the foam tape to the edge of the vehicle by the driver / left side rear door.

Repeat this process on the passenger side.



### Step 6

Apply the 25mm wide foam tape to the vehicle along the edge, continuing back to the rear door.

Cut off the excess foam tape. Using a utility knife, mark the three mounting points along the outer edge of the vehicle covered by the foam tape.

Repeat this process on the passenger side.



### Step 7

Place the cargo center-section on top of the back seat plate. Attach the center section to the back seat plate using four M8 x 25mm button head bolts, four M8 lock washers and four M8 flat washer at the four inner most points.

Snug the hardware, but do not fully tighten.



## Step 8

With the center section attached, lift and fold the lid section over to the back seat.

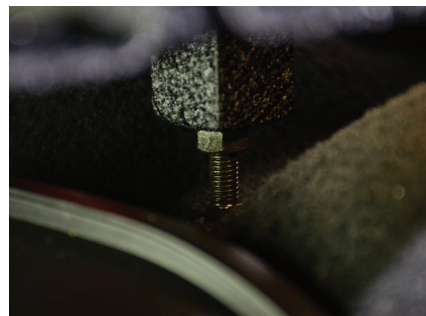
Select the driver / left side plate and place an M8 x 45mm cap head square neck bolt and M8 nut in bottom part of the driver plate.

**Note:** Nut will work as a locking device.

Screw in the bolt all the way as shown and adjust as needed to make plate level.

Repeat this process on the passenger side.

Snug the hardware, but do not fully tighten.

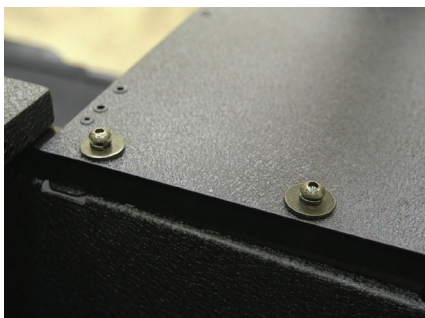


## Step 9

Once the support bolt is level, select the driver / left side-plate. Align the mounting holes on the driver-side plate with the mounting points on the upper cross bar and secure using the two 8mm x 25mm button head bolts, two M8 lock washers and two M8 flat washers that were removed in step 1.

Repeat this process on the passenger side.

Snug the hardware, but do not fully tighten.



## Step 10

Secure the bottom side of the cross bar to the back seat plate using four M8 x 25mm button head bolts, two M8 lock washers and two M8 flat washers.

Repeat this process on the passenger side.

Snug the hardware, but do not fully tighten.



### Step 11

Locate the driver-side insert plate and align the mounting holes on the insert plate with the mounting points on the driver-side plate.

Secure the insert plate using four M4 button head bolts, four M4 lock washers and four M4 flat washer.

Repeat this process on the passenger side.

Snug the hardware, but do not fully tighten.



### Step 12

Starting on the driver side, locate the rubber trim strip.

Slide the rubber trim over the edge of the driver-side plate / insert plate and wrap around the vehicle post. Cut off the excess rubber trim.

Repeat this process on the passenger side.



### Step 13

Place the hardtop in position on the vehicle.

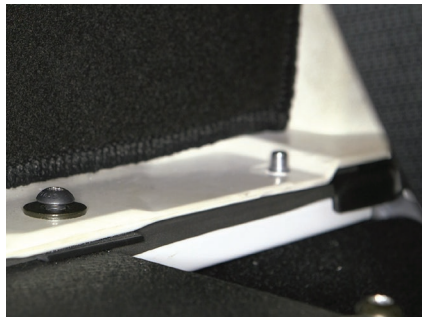
Close the center section. Use a mallet to make any adjustments needed to close the center section.

**Note:** To reinstall a soft top on the vehicle, place three M8 nut tabs per side under the lip where the top will be fastened down.



### Step 14

Once aligned, secure the top to the vehicle using an M8 x 35mm button head bolt, lock washer and flat washer for each of the factory mounting points.



### Step 15

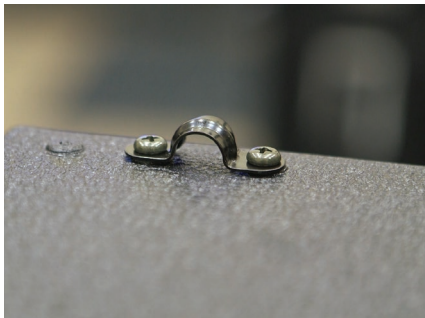
With the security cargo lid aligned and all bolts in place, tighten all of the hardware.



### Step 16

Place the tie down brackets into position and secure them to the cargo using two Philips machine screws per bracket.

To help seal the rear of the cargo lid, attach the rubber trim strip along the bottom edge of the side panels and center lid section.



### Step 17

Congratulations on the installation of your new ARIES security cargo lid.

With the security cargo lid installed, periodic inspections should be performed to ensure all mounting hardware remains tight.

