

INSTALLATION MANUAL

2055953

Level of Difficulty

Easy

This is the second of two manuals required to complete this installation. The first manual is included with your mounting brackets.

Parts List

1	Driver / left AdvantEDGE™ side bar
1	Passenger / right AdvantEDGE™ side bar

Attachment hardware is supplied with the mounting brackets. Hardware quantities will vary depending on the vehicle application.

Tools Required

Ratchet set	Torque wrench
-------------	---------------

Torque Specifications

	Metric	SAE	
	M6 bolt		3 ft-lbs.
	M8 bolt		7 ft-lbs.
	M10 bolt		16 ft-lbs.
	M12 bolt		28 ft-lbs.
	1/4" bolt		3 ft-lbs.
	5/16" bolt		7 ft-lbs.
	3/8" bolt		16 ft-lbs.
	7/16" bolt		20 ft-lbs.
	1/2" bolt		28 ft-lbs.

Use above torque setting unless otherwise noted

Product Photo



Notes and Maintenance

Before you begin installation, read all instructions thoroughly.

Proper tools will improve the quality of installation and reduce the time required.

To protect the product, wax after installing. Regular waxing is recommended to add a protective layer over the finish. Do not use any type of polish or wax that may contain abrasives that could damage the finish.

For polished, gloss and other smooth finishes, polish may be used to clear small scratches and scuffs on the finish.

Mild automotive detergent may be used to clean the product. Do not use dish detergent, abrasive cleaners, abrasive pads, wire brushes or other similar products that may damage the finish.

Refer to the table to the left when securing hardware during the installation process to help prevent damage to the product or vehicle.

Product Registration

CURT Group stands behind our products with industry leading warranties. You can help us continue to improve our product line and help us understand your needs by registering your purchase by visiting:

warranty.curtgroup.com/surveys

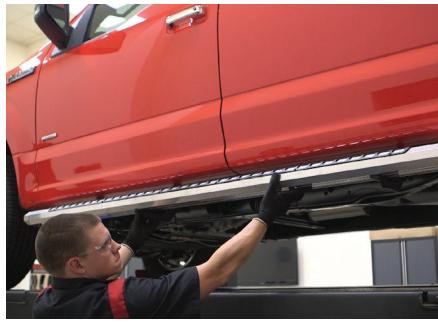
At CURT Group, customer is king. We value your feedback and we use that information to make improvements on our products. Please, take a minute and let us know how we are doing.

Step 1

Carefully place the side bar onto the mounting brackets. Ensure the outer edge of the side bar is lined up with the outer edge of the mounting brackets.

Locate the round slots on the bottom of the side bar. Insert a black M8 hex bolt into each slot and slide the pair of bolts to the front mounting bracket.

Repeat until two hex bolts are positioned for each mounting bracket. **Note:** The number of mounting brackets may vary based on application.

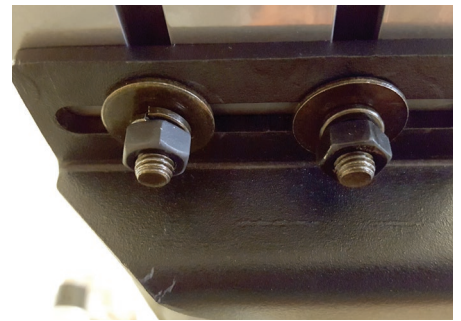
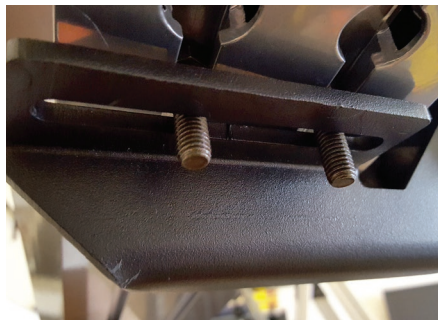


Step 2

Carefully lift the side bar up and adjust the bolts as necessary until they are in line with the slots on the mounting brackets.

Secure the side bar to the brackets using two black flat washers, lock washers and M8 hex nuts per mounting bracket.

Snug the hardware, but do not fully tighten.



Step 3

At this time, adjust the side bar to the desired location.

With the side bar in position, it is recommended to tighten all brackets to the vehicle first, followed by the side bar connections.

For recommended torque specifications, refer to the table on page 1.



Step 4

Repeat all steps for the passenger side of the vehicle.

Congratulations on the installation of your new ARIES AdvantEDGE™ side bars.

With the side bars installed, periodic inspections should be performed to ensure all mounting hardware remains tight.

To protect your investment, see the 'Notes and Maintenance' section on the first page of this installation manual.



Representative Image