

# INSTALLATION MANUAL

2051154

## Level of Difficulty

Easy

Installation difficulty levels are based on time and effort involved and may vary depending on the installer level of expertise, condition of the vehicle and proper tools and equipment.

## Parts List

Qty	Description
1	Driver / left running board
1	Passenger / right running board
2	Mounting bracket, front
2	Mounting bracket, front adapter 2014-2019
2	Mounting bracket, front adapter 2020
2	Mounting bracket, middle
2	Mounting bracket, rear0
6	T-bolt, 43mm tab
2	T-bolt, 50mm tab
2	T-bolt, 60mm tab
10	Flat washer, M10
10	Lock washer, M10
10	Hex nut, M10
10	Bolt retainer, plastic
8	Flat washer, M8
4	Lock washer, M8
4	Hex nut, M8
4	Hex bolt, M8 x 25mm

\*Running boards are supplied with additional hardware. Quantities listed are in addition to the standard supplied hardware.

## Tools Required

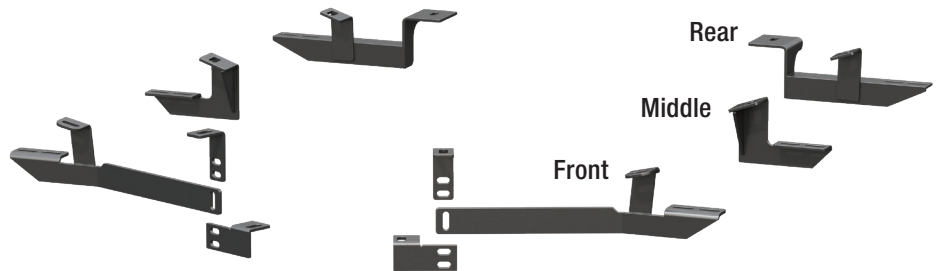
Ratchet	Socket, 13 mm
Flathead screwdriver	Socket, 17 mm
Wrench, 13 mm	--

## Torque Specifications

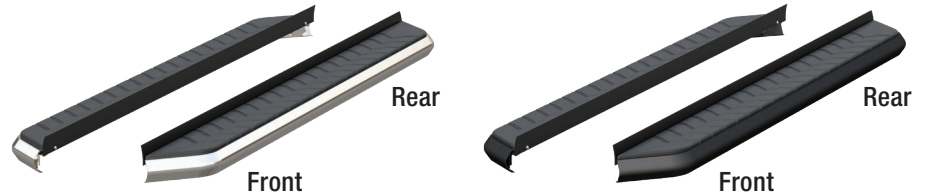
M8 bolt	7 ft.-lbs.
M10 bolt	16 ft.-lbs.

Use above torque setting unless otherwise noted

## Product Photo



## AeroTread™ Running Boards (not included)



## NOTICE

Visit [www.ariesautomotive.com](http://www.ariesautomotive.com) for a full-color copy of this instruction manual, as well as helpful videos, guides and much more!

Before you begin installation, read all instructions thoroughly.

Proper tools will improve the quality of installation and reduce the time required.

Periodic inspection of your product should be performed to ensure all hardware and / or components remain secure.

To help prevent damage to the product or vehicle, refer to the specified torque specifications when securing hardware during the installation process.

## Maintenance

Mild automotive detergent may be used to clean the product. Do not use dish detergent, abrasive cleaners, abrasive pads, wire brushes or other similar products that may damage the finish.

## Product Registration and Warranty

ARIES stands behind our products with industry-leading warranties. To get copies of the product warranties, register your purchase or provide feedback, visit: [warranty.curtgroup.com/surveys](http://warranty.curtgroup.com/surveys)

### Step 1

Starting on the driver side, locate the three mounting locations on the inside of the rocker panel. Locate the front bracket for the driver side.



### Step 2

Locate the hole plug on the front driver-side rocker panel and remove it with a flathead screwdriver.



### Step 3

Place a 43mm tab T-bolt into the round hole. Place a plastic retainer on the stud of the T-bolt to prevent it from falling inside the vehicle body panel.



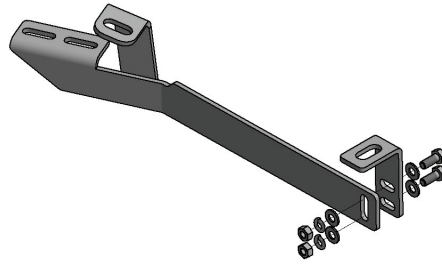
### Step 4

Remove the plug from the front frame mount location and install a 50mm tab T-bolt and use a plastic retainer to hold it in place.



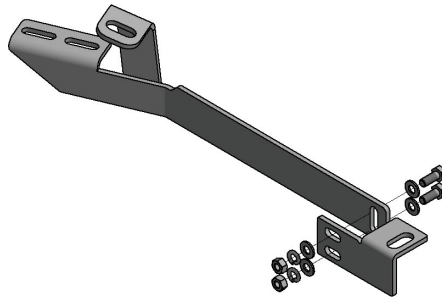
### Step 5A - 1994 - 2019 Models

Secure the 1994 - 2019 adapter bracket to the front bracket with two M8 x 25mm bolts, four M8 flat washers, two lock washers and two M8 hex nuts as shown.



### Step 5B - 2020 Model

Secure the 2020 adapter bracket to the front bracket with two M8 x 25mm bolts, four M8 flat washers, two lock washers and two M8 hex nuts as shown.



### Step 6

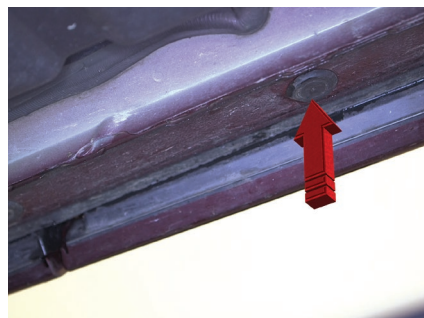
Place the front driver side bracket onto the vehicle and secure with two M10 hex nuts, two 10 mm lock washers and two M10 flat washers.

Snug the hardware, but do not fully tighten.



### Step 7

Locate the plug for the middle bracket location and remove it with a flathead screwdriver.



### Step 8

Insert a 43mm tab T-bolt into the round hole and use a plastic retainer to hold it in place.

Place the middle bracket onto the vehicle and secure with a M10 hex nut, M10 lock washer and M10 flat washer.

Snug the hardware, but do not fully tighten.



### Step 9

Remove the plugs for the rear bracket rocker panel mount and frame locations.

Install a 43mm tab T-bolt and plastic retainer in the hole on the rocker panel.

Install a 60mm tab T-bolt and plastic retainer in the hole on the frame.



### Step 10

Place the rear bracket onto the vehicle and secure with two M10 hex nuts, two M10 lock washers and two M10 flat washers.

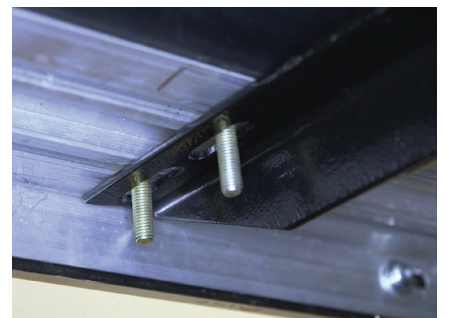
Snug the hardware, but do not fully tighten.



### Step 11

Remove the M8 nuts, M8 lock washers and M8 flat washers from the running board.

Place the running board onto the brackets and align the M8 bolts with the slots in the brackets on the vehicle.

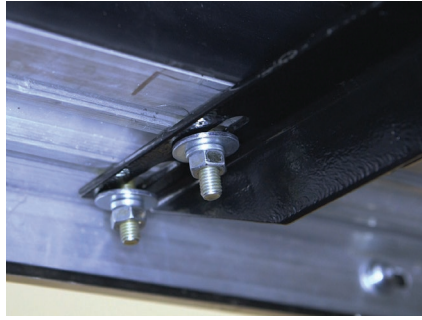


### Step 12

Attach the running board to the brackets using six M8 bolts, six M8 lock washers, six M8 flat washers and six M8 nuts. Snug the hardware, but do not fully tighten.

Adjust and level the running board, centering it between the front and rear wheel wells.

With the running board in position, it is recommended to tighten all brackets to the vehicle first, followed by the running board connections.



### Step 13

Repeat steps 1 through 11 on the passenger side of the vehicle.

Congratulations on the installation of your brand new ARIES AeroTread™ running boards.

With the running boards installed, periodic inspections should be performed to ensure all mounting hardware remains tight.

To protect your investment, see the 'Notes and Maintenance' section on the first page of this instruction manual.

