

### Parts List

1	Driver / left running board
1	Passenger / right running board
4	Mounting bracket, front
2	Mounting bracket, rear
12	Hex bolt, M8
12	Flat washer, M8
12	Lock washer, M8
12	Clip nut, M8

### Additional Hardware\*

12	Hex bolt, M8
12	Flat washer, M8
12	Lock washer, M8
12	Hex nut, M8

\* Running boards are supplied with additional hardware. Quantities listed are in addition to the standard supplied hardware.

### Tools Required

Ratchet	Socket, 13mm
Socket extension	Level

### Torque Specifications

METRIC	Bolt	Torque
	M6 bolt	3 ft.-lbs.
	M8 bolt	7 ft.-lbs.
	M10 bolt	16 ft.-lbs.
	M12 bolt	28 ft.-lbs.
SAE	Bolt	Torque
	1/4" bolt	3 ft.-lbs.
	5/16" bolt	7 ft.-lbs.
	3/8" bolt	16 ft.-lbs.
	7/16" bolt	20 ft.-lbs.
	1/2" bolt	28 ft.-lbs.

Use above torque setting unless otherwise noted

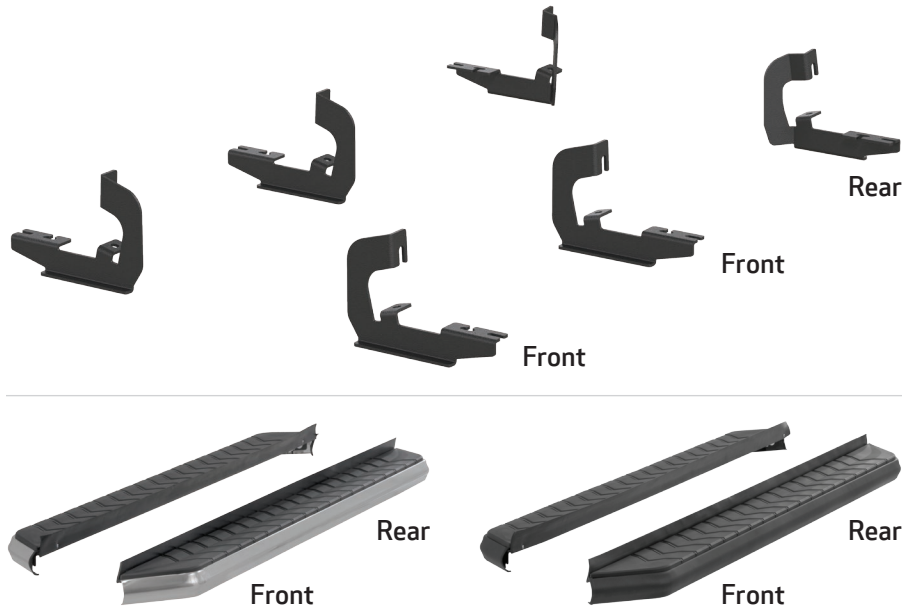
### Level of Difficulty

Easy



Scan for helpful install tips

### Product Image



### Notes and Maintenance

Before you begin installation, read all instructions thoroughly.

Proper tools will improve the quality of installation and reduce the time required.

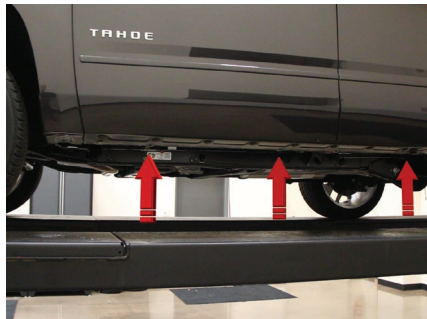
For stainless steel, polish may be used to clear small scratches and scuffs on the finish. Mild soap may be used also to clean the product.

For black finishes, mild soap may be used to clean the product.

Refer to the table to the left when securing hardware during the installation process to help prevent damage to the product or vehicle.

### Step 1

Starting on the driver side, locate the three mounting locations underneath the vehicle.

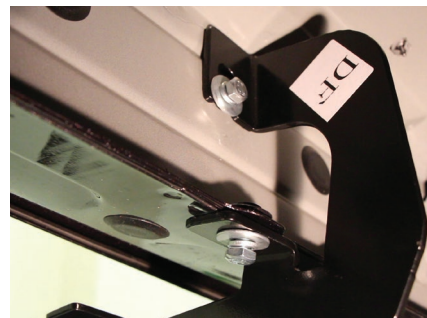


### Step 2

Locate the front mounting tab.

Place the front mounting bracket onto the vehicle and secure with two M8 hex bolts, two M8 lock washers and two M8 flat washers.

Snug the hardware, but do not fully tighten.



### Step 3

Repeat step 2 to install the middle and rear mounting brackets.



### Step 4

Remove the M8 nuts, M8 lock washers and M8 flat washers from the running board.

Place the running board onto the brackets and align the M8 bolts with the slots in the brackets on the vehicle.



### Step 5

Attach the running board to the brackets using six M8 bolts, lock washers, flat washers and nuts.

Snug the hardware, but do not fully tighten.



### Step 6

Adjust and level the running board, centering it between the front and rear wheel wells.

With the running board in position, it is recommended to tighten all brackets to the vehicle first, followed by the running board connections.



### Step 7

Repeat steps 1 through 6 on the passenger side of the vehicle.

Congratulations on the installation of your new ARIES AeroTread™ running boards.

With the running boards installed, periodic inspections should be performed to ensure all mounting hardware remains tight.

To protect your investment, see the 'Notes and Maintenance' section on the first page of this instruction manual.

