

### Parts List

1	Driver / left side bar
1	Passenger / right side bar
1	Driver / left front mounting bracket
1	Passenger / right front mounting bracket
2	Mounting bracket, rear
2	Bolt plate, M8
5	Hex bolt, M8
7	Flat washer, M8
7	Lock washer, M8
2	Hex nut, M8
2	Plastic retainer, M8
4	Hex bolt, M10
4	Flat washer, M10
4	Lock washer, M10
4	Bolt / nut plate, M12 stud
4	Hex bolt, M12
4	Flat washer, M12 x 32mm
4	Flat washer, M12
8	Lock washer, M12
4	Hex nut, M12
4	Plastic retainer, M12

### Tools Required

Torque wrench	Socket, 13mm
Utility knife	Socket, 16mm
Level	Socket, 18mm

### Level of Difficulty

Easy



Scan for helpful install tips

### Product Image



### Brackets



### Notes and Maintenance

Before you begin installation, read all instructions thoroughly.

Proper tools will improve the quality of installation and reduce the time required.

To protect the product, wax after installing. Regular waxing is recommended to add a protective layer over the finish. Do not use any type of polish or wax that may contain abrasives that could damage the finish.

For polished, gloss and other smooth finishes, polish may be used to clear small scratches and scuffs on the finish.

Mild automotive detergent may be used to clean the product. Do not use dish detergent, abrasive cleaners, abrasive pads, wire brushes or other similar products that may damage the finish.

Refer to the table on page 2 when securing hardware during the installation process to help prevent damage to the product or vehicle.

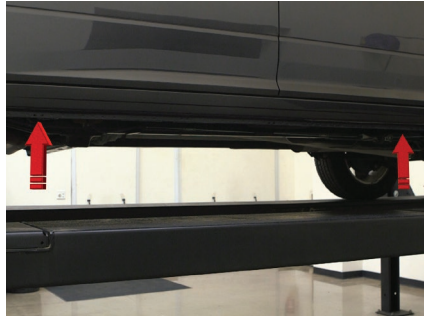
## Torque Specifications

METRIC		SAE	
M6 bolt	3 ft.-lbs.	1/4" bolt	3 ft.-lbs.
M8 bolt	7 ft.-lbs.	5/16" bolt	7 ft.-lbs.
M12 bolt	16 ft.-lbs.	3/8" bolt	16 ft.-lbs.
M12 bolt	28 ft.-lbs.	7/16" bolt	20 ft.-lbs.
--	--	1/2" bolt	28 ft.-lbs.

Use above torque setting unless otherwise noted

### Step 1

Starting on the driver side, locate the two mounting locations underneath the vehicle.



### Step 2

Locate the driver-side front mounting location and remove the tape plug from each hole.

Insert an M8 bolt plate into the hole closest to the front of the vehicle. Slide a plastic bolt retainer over the thread of the bolt to hold it in place.

Insert a M12 bolt and nut plate into the remaining hole. Slide a plastic bolt retainer over the thread of the bolt to hold it in place.

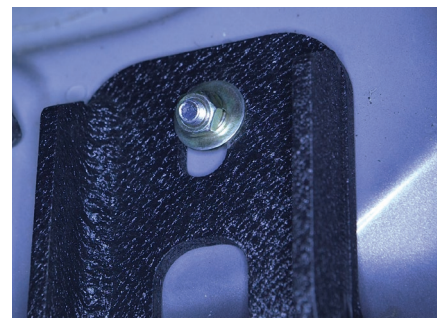


### Step 3A - 2015 and newer with factory inserts

Place the driver-side front mounting bracket onto the vehicle and secure the left side of the bracket with a M12 flat washer, M12 lock washer and M12 hex nut on the bolt plate and two M8 hex bolts, two M8 flat washers and two M8 lock washers on the bottom.

**Note:** The M10 nut on the M12 bolt plate will not be used on vehicles with threaded inserts.

Finish securing the right side of the bracket with an M8 flat washer, M8 lock washer and M8 hex nut. Snug the hardware, but do not fully tighten.



### Step 3B - 2015 and older without factory inserts

On older model vehicles without factory threaded inserts, install the bracket with the provided M8 bolt plate and M12 bolt / M10 nut plate as directed in step 3A.

Align the M10 nut with one of the bottom holes in the rocker panel and secure with a M10 hex bolt, lock washer and nut.



### Step 4

To install the rear bracket, insert a M12 bolt / M10 nut plate into the slot in the rocker panel. Secure the M12 stud with a plastic retainer and place the rear bracket in position.

Secure the top of the bracket to the M12 stud with a flat washer, lock washer and nut.

**On 2015 and newer models (with M8 factory inserts):** Secure the bottom of the bracket with one M8 hex bolt, lock washer and flat washer.

**On 2015 and older models (without M8 factory inserts):** Rotate the bolt plate to position the nut behind the lower mounting position and secure with a M10 hex bolt, flat washer and lock washer.



### Step 5

Place the side bar onto the brackets and align the mounting holes with the holes in the brackets on the vehicle.

Attach the side bar to the brackets using two M10 hex bolts, two M10 lock washers and two M10 flat washers.

Snug the hardware, but do not fully tighten.



## Step 6

Adjust and level the side bar.

With the side bar in position, it is recommended to tighten all brackets to the vehicle first, followed by the side bar connections.



## Step 7

Locate the passenger-side front mounting location. Insert a M12 bolt / M10 nut plate into the body panel. Slide a plastic bolt retainer over the thread of the bolt to hold it in place.

Insert a second M8 bolt plate into the remaining top slot on the rocker panel. Slide a plastic bolt retainer over the thread of the bolt to hold it in place.



## Step 8

Place the passenger-side front mounting bracket onto the vehicle and secure the top, front location with an M8 flat washer, lock washer and nut. Secure the top rear location with a M12 flat washer, lock washer, and nut.

**On 2015 and newer models (with M8 factory inserts):** Secure the bottom of the bracket with one M8 hex bolt, lock washer and flat washer.

**On 2015 and older models (without M8 factory inserts):** Rotate the bolt plate to position the nut behind the lower mounting position and secure with a M10 hex bolt, flat washer and lock washer.



## Step 9

Repeat steps 4 through 6 to complete side bar installation on the passenger side of the vehicle.

Congratulations on the installation of your new ARIES 3" round side bars.

With the side bars installed, periodic inspections should be performed to ensure all mounting hardware remains tight.

To protect your investment, see the 'Notes and Maintenance' section on the second page of this instruction manual.

