

INSTALLATION INSTRUCTIONS

2007-10 FORD EXPEDITION

PART # 203030 / 203030-2

PARTS LIST:

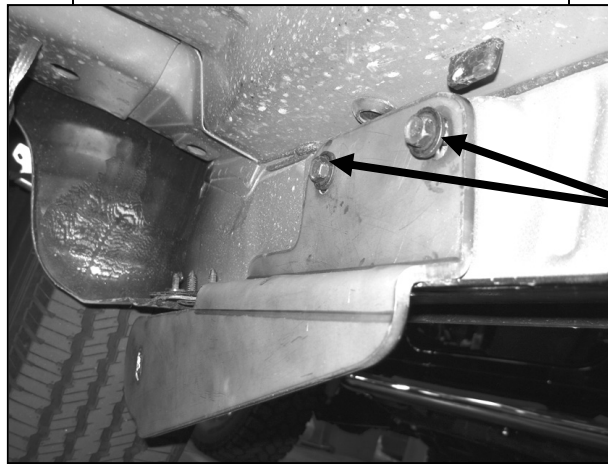
1	Driver Side Bar	8	8-1.25mm x 25mm Self Tapping Bolts
1	Passenger Side Bar	10	8-1.25mm x 25mm Hex Head Bolts
1	Driver Side Front Mounting Bracket	10	8mm Nylock Nuts
1	Passenger Side Front Mounting Bracket	20	8mm Flat Washers
1	Driver Side Rear Mounting Bracket	4	1/2" x 2" Hex Head Bolts
1	Passenger Side Mounting Bracket	4	1/2" Lock Washers
		4	1/2" Thick Flat Washers

PROCEDURE:

- 1. REMOVE CONTENTS FROM BOX. VERIFY ALL PARTS ARE PRESENT. READ INSTRUCTIONS CAREFULLY BEFORE STARTING INSTALLATION.**
- Determine the front and rear passenger side mounting location. Located by the front and the rear side of pinch weld.
- Position front passenger side Mounting Bracket with downward sloping end towards the front. Attach Mounting Bracket to existing holes on the side panel using the included (2) 8-1.25mm x 25mm Self Tapping Bolts (Figure 1). Do not tighten at this time.
- Insert (from the bottom) (2) 8-1.25mm x 25mm Hex Head Bolts with (2) 8mm Flat Washers through pinch weld and the holes on the Mounting Bracket. Secure those with (2) 8mm Nylock Nuts and (2) 8mm Flat Washers (Figure 2). Do not tighten at this time.
- Position rear passenger side Mounting Bracket with downward sloping end towards the rear. Attach Mounting Bracket to existing holes on the side panel using the included (2) 8-1.25mm x 25mm Self Tapping Bolts (Figure 1). Do not tighten at this time.
- Insert (from the bottom) (3) 8-1.25mm x 25mm Hex Head Bolts with (3) 8mm Flat Washers through pinch weld and the holes on the Mounting Bracket. Secure those with (3) 8mm Nylock Nuts and (3) 8mm Flat Washers (Figure 2). Do not tighten at this time.
- Mount passenger Side Bar to Mounting Brackets using the included (2) 1/2" x 2" Hex Head Bolts, (2) 1/2" Lock Washers, and (2) 1/2" Thick Flat Washers (Figure 3). Do not tighten at this time.
- Level and adjust Side Bar, then tighten all hardware at this time.
- Repeat steps 2-8 for driver Side Bar installation.
- Do periodic inspections to the installation to make sure that all hardware is secure and tight.



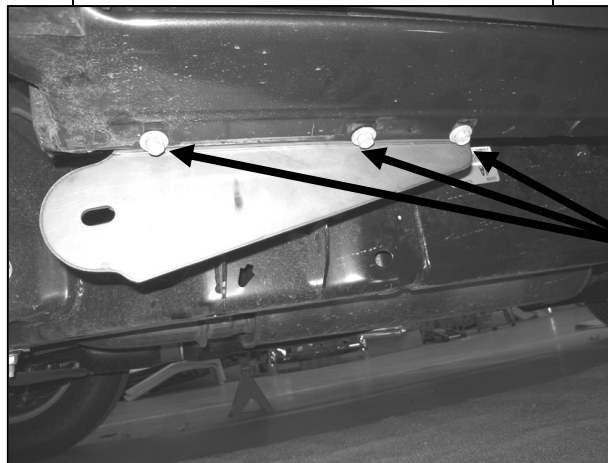
Passenger Front Mounting Bracket Shown



8mm x 25mm Self Tapping Bolts

Figure 1

Passenger Rear Mounting Bracket Shown



8mm x 25mm Hex Head Bolts,
8mm Nylock Nuts, &
8mm Flat Washers

Figure 2

Driver Front Mounting Bracket Shown



Figure 3

1/2" x 2" Hex Head Bolts,
1/2" Lock Washer, &
1/2" Flat Washers

Installation Complete



Figure 4