

Parts List

1	Driver / left side bar
1	Passenger / right side bar
2	Mounting bracket, front
2	Mounting bracket, middle
2	Mounting bracket, rear
12	Hex bolt, M8 x 30mm
12	Flat washer, M8
12	Lock washer, M8
12	Hex bolt, M10 x 25mm
12	Flat washer, M10
12	Lock washer, M10

Level of Difficulty

Easy

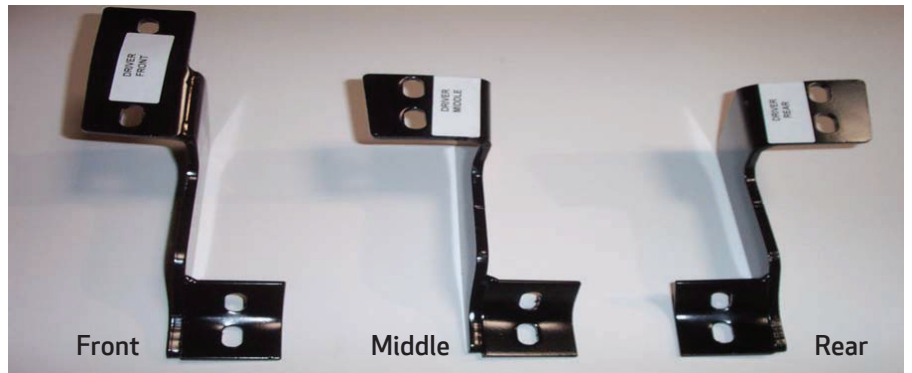


Scan for helpful install tips

Product Image



Brackets



Torque Specifications

	Torque Specifications	
METRIC	M6 bolt	3 ft.-lbs.
	M8 bolt	7 ft.-lbs.
	M10 bolt	16 ft.-lbs.
	M12 bolt	28 ft.-lbs.
SAE	1/4" bolt	3 ft.-lbs.
	5/16" bolt	7 ft.-lbs.
	3/8" bolt	16 ft.-lbs.
	7/16" bolt	20 ft.-lbs.
	1/2" bolt	28 ft.-lbs.

Notes and Maintenance

Before you begin installation, read all instructions thoroughly.

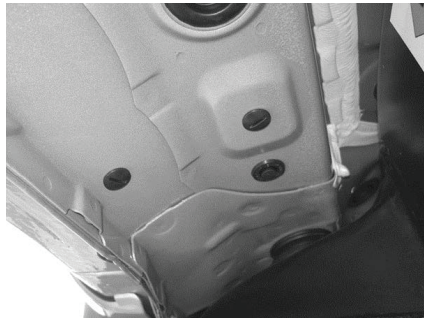
Proper tools will improve the quality of installation and reduce the time required.

For stainless steel and aluminum, polish may be used to clear small scratches and scuffs on the finish. Mild soap may be used also to clean the product.

Refer to the table to the left when securing hardware during the installation process to help prevent damage to the product or vehicle.

Step 1

Starting on the driver side, locate the three mounting locations underneath the vehicle. Remove the plastic plugs from each location.



Step 2

Place the front driver-side bracket onto the vehicle and secure using M8 hex bolts, lock washers and flat washers for each outer hole.

Snug the hardware, but do not fully tighten.

Repeat this process to install the middle and rear mounting brackets.

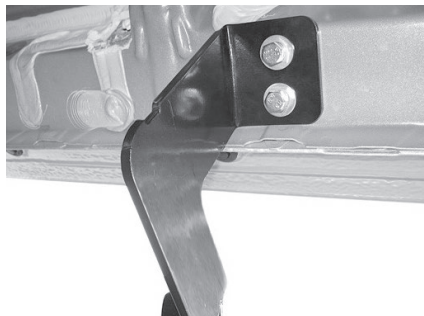


Step 3

Place the side bar onto the mounting brackets and align the mounting points.

Secure the side bar to the brackets using an M10 hex bolt and flat washer at each mounting location.

Snug the hardware, but do not fully tighten.



Step 4

Adjust and level the side bar.

With the side bar in position, it is recommended to tighten all brackets to the vehicle first, followed by the side bar connections.



Step 5

Repeat steps 1 through 5 on the passenger side of the vehicle.

Congratulations on the installation of your new ARIES 3" round side bars.

With the side bars installed, periodic inspections should be performed to ensure all mounting hardware remains tight.

To protect your investment, see the 'Notes and Maintenance' section on the second page of this instruction manual.

