

### Parts List

|   |  |
|---|--|
| 1 | Driver / left side, mounting bracket     |
| 2 | Passenger / right side, mounting bracket |

### Tools Required

|                     |               |
|---------------------|---------------|
| Ratchet             | Socket, 7mm   |
| Allen wrench, 2.5mm | Utility knife |
| Torx bit, T-45      | --            |

### Torque Specifications

|               | Torque Specifications |             |
|---------------|-----------------------|-------------|
| <b>METRIC</b> | M6 bolt               | 3 ft.-lbs.  |
|               | M8 bolt               | 7 ft.-lbs.  |
|               | M10 bolt              | 16 ft.-lbs. |
|               | M12 bolt              | 28 ft.-lbs. |
| <b>SAE</b>    | 1/4" bolt             | 3 ft.-lbs.  |
|               | 5/16" bolt            | 7 ft.-lbs.  |
|               | 3/8" bolt             | 16 ft.-lbs. |
|               | 7/16" bolt            | 20 ft.-lbs. |
|               | 1/2" bolt             | 28 ft.-lbs. |

### Level of Difficulty

Easy



Scan for helpful install tips

### Product Image

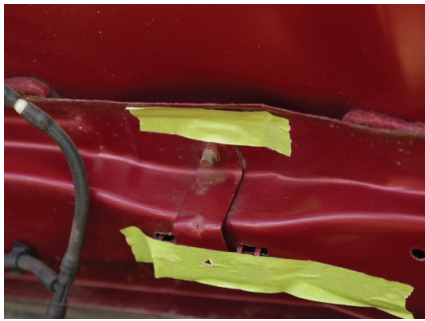


### Notes and Maintenance

- Before you begin installation, read all instructions thoroughly.
- Proper tools will improve the quality of installation and reduce the time required.
- For black finishes, mild soap may be used to clean the product.
- Refer to the table to the left when securing hardware during the installation process to help prevent damage to the product or vehicle.

### Step 1 (optional)

For easier installation, tape down the bolt plate to the hood of the Jeep to keep it from moving during installation.



### Step 2

Remove the six hinge bolts on the hood of the Jeep following the instructions below.

Using a utility knife, cut the paint around the fasteners to aid in removal and prevent the paint from peeling off the hinge.

Using a ratchet and a T-45 Torx bit, remove the fasteners. Make sure to put pressure down on the fastener to prevent stripping.



### Step 3

If desired, the stainless steel logo plate can be removed to route light wiring under the logo plate.

Using a 2.5mm Allen wrench and a 7mm socket, remove the four fasteners securing the logo plate to the bracket.

If the logo plates are removed, make sure to tighten all logo plate fasteners to 20 in.-lbs. when reinstalling.



### Step 4

Install the LED lights using the light manufacturer's fasteners. The brackets are designed to accommodate an M6 or M8 fastener. If the fasteners are larger, some drilling may be required.

Fasten the LED light bar to the brackets.

Snug the fasteners, but do not fully tighten.



### Step 5

Place the bracket / light bar assembly onto the Jeep.

Be sure to loosely start all of the bolts before tightening.

It is recommended that two people hold the light bar in place while the fasteners are secured.



### Step 6

Using a T-45 Torx bit, tighten the six factory button head cap screws to the Jeep. Tighten the fasteners securing the LED light bar to the mounting brackets.

**Note:** Tighten all M8 factory bolts using vehicle owner manual specifications and all light bar fasteners listed above to the light bar manufacturer's torque specifications.



### Step 7

Congratulations on the installation of your new ARIES hood light mounting brackets.

With the hood light mounting brackets installed, periodic inspections should be performed to ensure all mounting hardware remains tight.

