

INSTALLATION MANUAL

15911

Level of Difficulty

Moderate

Parts List

1	Driver / left mounting bracket
1	Passenger / right mounting bracket
1	Driver / left logo plate
1	Passenger / right logo plate
8	Button head screw, M4 x 14mm
10	Flat washer, M8
10	Button head screw, M8 x 35mm
10	Spacer

Tools Required

Ratchet	Allen wrench, 5mm
Torx bit, T-20	Torx bit, T-50

Torque Specifications

	Metric	SAE	
	M6 bolt		3 ft-lbs.
	M8 bolt		7 ft-lbs.
	M10 bolt		16 ft-lbs.
	M12 bolt		28 ft-lbs.
	1/4" bolt		3 ft-lbs.
	5/16" bolt		7 ft-lbs.
	3/8" bolt		16 ft-lbs.
	7/16" bolt		20 ft-lbs.
	1/2" bolt		28 ft-lbs.

Use above torque setting unless otherwise noted

Product Photo



Notes and Maintenance

Before you begin installation, read all instructions thoroughly.

Proper tools will improve the quality of installation and reduce the time required.

To protect the product, wax after installing. Regular waxing is recommended to add a protective layer over the finish. Do not use any type of polish or wax that may contain abrasives that could damage the finish.

For polished, gloss and other smooth finishes, polish may be used to clear small scratches and scuffs on the finish.

Mild automotive detergent may be used to clean the product. Do not use dish detergent, abrasive cleaners, abrasive pads, wire brushes or other similar products that may damage the finish.

Refer to the table to the left when securing hardware during the installation process to help prevent damage to the product or vehicle.

Product Registration

CURT Group stands behind our products with industry leading warranties. You can help us continue to improve our product line and help us understand your needs by registering your purchase by visiting:

warranty.curtgroup.com/surveys

At CURT Group, customer is king. We value your feedback and we use that information to make improvements on our products. Please, take a minute and let us know how we are doing.

Step 1

Starting on the driver side, use a ratchet and a T-50 Torx bit to remove the top five factory fasteners from the windshield pillar.



Step 2

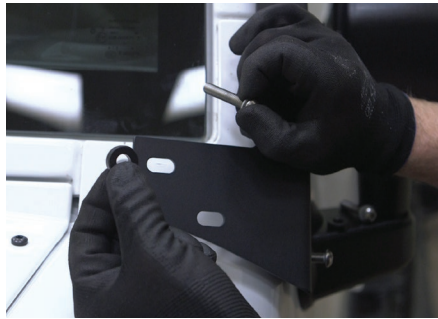
Select the driver-side mounting bracket and install using the provided M8 x 35mm button head screw, M8 flat washer and spacer.

Once the spacers are between the mounting bracket and vehicle, start all five screws.

Snug the hardware, but do not fully tighten.

Note: To make the installation of the spacers between the bracket and vehicle easier, apply a small amount of adhesive to the spacers and temporarily secure them to the vehicle over the mounting locations.

Repeat this process to attach the passenger-side bracket to the vehicle.



Step 3

With help, lift the light bar into place and fasten to the driver- and passenger-side mounting brackets using the hardware provided with the light bar.

Level and adjust the light bar.
At this time, tighten all hardware.



Step 4

Complete the installation by attaching the driver- and passenger-side logo plates with the provided M4 x 14mm button head screws.

With the roof light mounting brackets installed, periodic inspections should be performed to ensure all mounting hardware remains tight.

Congratulations on the installation of your new ARIES roof light mounting brackets.

