

INSTALLATION MANUAL

1500550

Level of Difficulty

Moderate

Parts List

1	Driver / left inner fender liner
1	Passenger / right inner fender liner
2	Z-hanger bracket
2	L-hanger bracket
1	Thread-set bolt, M6
2	Button head bolt, M6
18	Hex bolt, M6
6	Hex nut, M6
12	Rivet nut, M6
26	Flat washer, M6
20	Lock washer, M6
1	Left hand-nut, M8
2	Lock washer, M8
4	Flat washer, M8
2	Hex bolt, M8
2	Hex nut, M8
2	Spacer tube
1	Allen wrench
1	Thread-set washer
1	Thread-set spacer

Tools Required

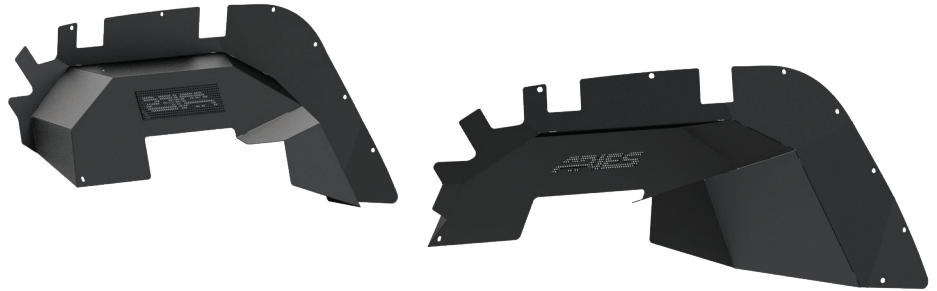
Ratchet	Wrench set
Socket set	Drill
Panel trim removal tool	Drill bit, 25/64" or 10mm
Allen wrench	Thread-set tool

Torque Specifications

Metric	M6 bolt	3 ft-lbs.
	M8 bolt	7 ft-lbs.
	M10 bolt	16 ft-lbs.
	M12 bolt	28 ft-lbs.
SAE	1/4" bolt	3 ft-lbs.
	5/16" bolt	7 ft-lbs.
	3/8" bolt	16 ft-lbs.
	7/16" bolt	20 ft-lbs.
	1/2" bolt	28 ft-lbs.

Use above torque setting unless otherwise noted

Product Photo



Notes and Maintenance

Before you begin installation, read all instructions thoroughly.

Proper tools will improve the quality of installation and reduce the time required.

To protect the product, wax after installing. Regular waxing is recommended to add a protective layer over the finish. Do not use any type of polish or wax that may contain abrasives that could damage the finish.

Mild automotive detergent may be used to clean the product. Do not use dish detergent, abrasive cleaners, abrasive pads, wire brushes or other similar products that may damage the finish.

Refer to the table to the left when securing hardware during the installation process to help prevent damage to the product or vehicle.

Product Registration

CURT Group stands behind our products with industry leading warranties. You can help us continue to improve our product line and help us understand your needs by registering your purchase by visiting:

warranty.curtgroup.com/surveys

At CURT Group, customer is king. We value your feedback and we use that information to make improvements on our products. Please, take a minute and let us know how we are doing.

Step 1

Starting on the driver side, remove the front inner fender wells using a socket set.



Step 2

Remove all push-in retainers, taking care not to damage the plastic inner fender liner.

Once all retainers have been removed, remove the inner fender liner and set it aside.



Step 3

Disconnect the side marker light from the factory harness.



Step 4

Remove the plastic trim retainer clips and the factory fender flare.



Step 5

Using the factory metal brace to help balance the inner liner, place the inner liner up against the Jeep body and align the mounting holes.



Step 6

Identify the matching holes from the new inner liner and the original holes.

Mark the locations where drilling is needed.



Step 7

Remove the fender flare and inner fender liner and drill 25/64" or 10mm holes to fit the M6 threaded metal inserts supplied with the fender flares.

Do not make the holes larger than required or the rivet nuts may fail to install.

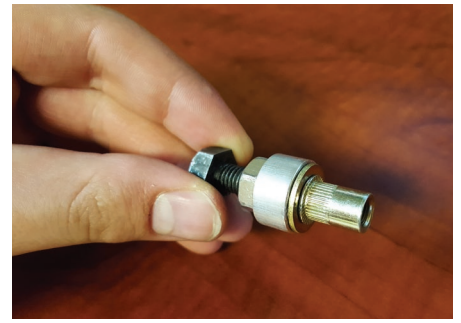
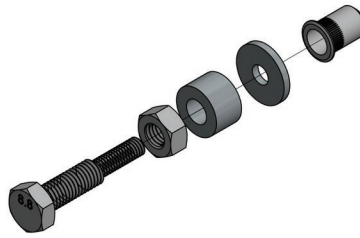


Step 8

Screw the left hand-nut completely onto the thread-set tool. Slide the thread-set spacer onto the larger thread until it rests against the M8 left hand-nut.

Place an M6 flat washer on the small thread followed by an M6 rivet nut.

Thread the rivet nut onto the small end of the tool until it seats the washer against the shoulder between the M6 and M8 threads.

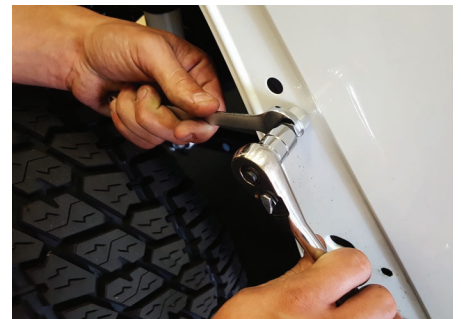


Step 9

Insert the rivet nut into the drilled hole.

Using a 13mm wrench, hold the M8 nut on the thread-set tool. With a 13mm socket, turn the head of the bolt clockwise until the M8 nut and thread-set spacer contact the M6 washer and rivet nut. After tension is felt, carefully compress the rivet nut in the hole while applying slight pressure to keep it seated (approximately two full rotations).

CAUTION: Over tightening the rivet nut may damage the thread-set tool and / or vehicle panel. Only compress the rivet nut enough to seat it in the hole without rotating.



Step 10

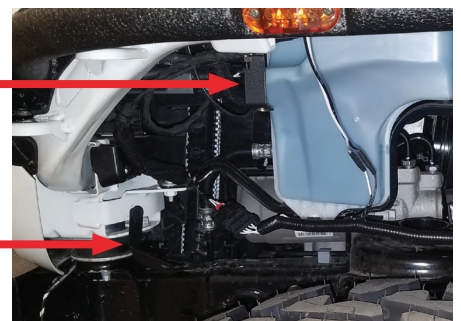
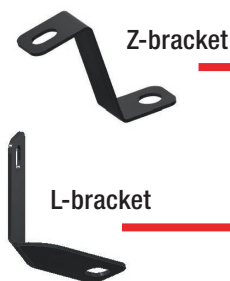
Drill a through-hole for for an M8 bolt and insert an M8 bolt spacer.



Step 11

Using an M6 button head bolt, flat washer and lock washer, place a Z-hanger bracket onto the Jeep.

Install the L-bracket and secure using a previously removed push-in retainer.



Step 12

If a side marker light is used, the wiring harness will need to be routed and connected prior to installation of the inner fender liner.

Assistance may be required to hold the inner liner and outer fender flare in place until the bolts have been started.



Step 13

With brackets in place, insert a tube spacer in the frame and hold up the inner liner. Secure in place using an M8 hex bolt, lock washer, flat washer and hex nut.



Step 14

Using an M6 bolt, flat washer and lock washer, mount the inner fender liner to the Z-hanger bracket and L-hanger bracket on the Jeep.

Snug the hardware, but do not fully tighten.



Step 15

Using six M6 bolts, flat washers and lock washers, secure the outer fender flare (if used) over the inner fender liner.

Snug the hardware, but do not fully tighten.

Assistance may be required to hold the fender flare and inner fender liner in place while the fasteners are started.



Step 16

Tighten down all hardware and torque to the values specified on the first page of this manual.

Repeat this process on the passenger side.



Step 17

Congratulations on the installation of your new ARIES inner fender liners.

With the fender flares and inner fender liners installed, periodic inspections should be performed to ensure all mounting hardware remains tight.

To protect your investment, see the 'Notes and Maintenance' section on the first page of this instruction manual.

