

7929 Lincoln Ave. Riverside, CA 92504
Phone: 951.689.ICON | Fax: 951.689.1016

PART #	DESCRIPTION
198001	BILLET SPANNER WRENCH

COMPONENTS INCLUDED	
(1) 297500 BILLET SPANNER WRENCH HANDLE	(1) 605980 ALLEN WRENCH 5/32 2.5" HANDLE
HARDWARE INCLUDED	
N/A	
TOOLS REQUIRED	
N/A	
TECH NOTES	
<p>1. ALL COIL NUTS HAVE 7 PIN HOLES PER REVOLUTION</p> <p>2. 2.0 SERIES COILOVERS HAVE 10 THREADS PER INCH (2.5 TURNS = 1/4 INCH)</p> <p>3. 2.5 SERIES COILOVERS HAVE 12 THREADS PER INCH (3 TURNS = 1/4 INCH)</p> <p>4. 3.0 SERIES COILOVERS HAVE 12 THREADS PER INCH (3 TURNS = 1/4 INCH)</p> <p>5. DO NOT ADJUST PRELOAD BEYOND ICON-SPECIFIED MEASUREMENT OF EXPOSED THREADS (REFER TO SHOCK INSTRUCTIONS FOR MEASUREMENT)</p>	



WARNING!
<p>** READ ALL INSTRUCTIONS THOROUGHLY FROM START TO FINISH BEFORE BEGINNING INSTALLATION! IF THESE INSTRUCTIONS ARE NOT PROPERLY FOLLOWED SEVERE FRAME, SUSPENSION AND TIRE DAMAGE MAY RESULT TO THE VEHICLE!</p> <p>** ICON VEHICLE DYNAMICS RECOMMENDS THAT YOU EXERCISE EXTREME CAUTION WHEN WORKING UNDER A VEHICLE THAT IS SUPPORTED WITH JACK STANDS.</p> <p>** ICON VEHICLE DYNAMICS RECOMMENDS ALL INSTALLATION TO BE PERFORMED BY A PROFESSIONAL SHOP/SERVICE TECHNICIAN. PRODUCT FAILURE CAUSED BY IMPROPER INSTALLATION WILL NOT BE COVERED UNDER ICON'S WARRANTY POLICY.</p>

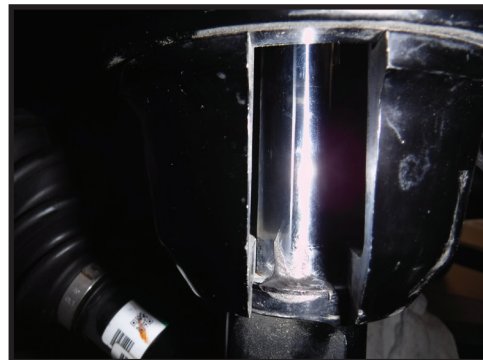
ADJUSTING PRELOAD

1. Before adjusting preload, support the vehicle from the frame using a floor jack, allowing the suspension to droop fully.
2. To ease adjusting process:
 - Clean the threads on the shock body of any dirt.
 - Apply a small amount of anti-seize to the threads on the shock body in the direction to be adjusted. [FIGURE 1]
3. Apply a small dab of anti-seize to the top surface of the rod end in the slot of the coil cup. [FIGURE 2]

FIG.1



FIG.2

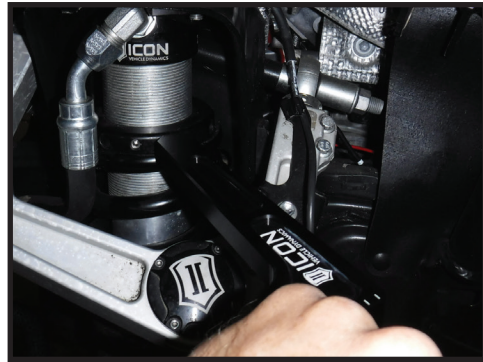


4. Using the supplied 5/32 allen wrench, loosen the set screw until the top of the set screw is flush with the surface of the coil adjuster nut. [FIGURE 3]

FIG.3



FIG.4



5. Insert the spanner wrench into the holes of the coil adjuster nut and turn to adjust [FIGURE 4]. Turn clockwise to increase preload, turn counter-clockwise to decrease preload [FIGURE 5]. The curved side of the spanner wrench works better on some vehicles, and is intended to only be used on a 2.5 coilover. [FIGURE 6]

FIG.5

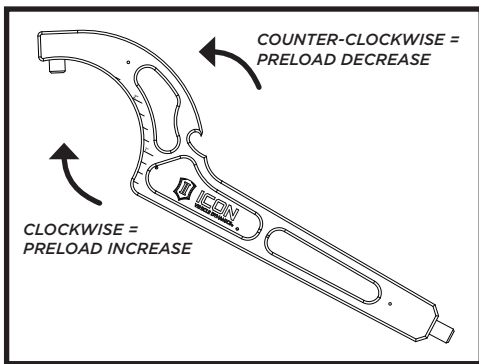


FIG.6



6. Check exposed threads on shock body using supplied measuring scale. [FIGURE 7]

FIG.7



7. After adjusting to desired height, orient coil adjuster nut and set screw to point out (towards the tire) and tighten set screw using the supplied 5/32 allen. Only tighten until snug as the tip of the set screw is nylon.

8. Store somewhere easily accessible using magnets. [FIGURE 8]

FIG.8



**VERIFY ALL FASTENERS ARE PROPERLY TORQUED BEFORE DRIVING VEHICLE.
RETORQUE ALL NUTS, BOLTS AND LUGS AFTER 100 MILES AND PERIODICALLY THEREAFTER.**

ICON VEHICLE DYNAMICS LIMITED LIFETIME WARRANTY

ICON Vehicle Dynamics warrants to the original retail purchaser who owns the vehicle on which the product was originally installed. ICON Vehicle Dynamics does not warrant the product for finish, alterations, modifications and/or installation contrary to ICON Vehicle Dynamics instructions. ICON Vehicle Dynamics products are not designed, nor are they intended to be installed on vehicles used in race applications, for racing purposes or for similar activities. (A "race" is defined as any contest between two or more vehicles, or a contest of one or more vehicles against the clock, whether or not such contest is for a prize). This warranty does not include coverage for police or taxi vehicles, race vehicles, or vehicles used for government or commercial purposes. Also excluded from this warranty are sales outside of the United States of America and Canada.

ICON Vehicle Dynamics' obligation under this warranty is limited to the repair or replacement, at ICON Vehicle Dynamics' discretion, of the defective product. Any and all costs of removal, installation or re-installation, freight charges and incidental or consequential damages are expressly excluded from this warranty. Items that are subject to wear are not considered defective when worn and are not covered.

ICON Vehicle Dynamics components must be installed as a complete kit as shown in our current application guide. Any substitutions or exemptions of required components will immediately void the warranty. Some finish damage may happen to parts during shipping and is not covered under warranty.

This warranty is expressly in lieu of all other warranties expressed or implied. This warranty shall not apply to any product that has been improperly installed, modified or customized subject to accident, negligence, abuse or misuse.



ICON VEHICLE DYNAMICS®
PERFORMANCE SUSPENSION SYSTEMS AND SHOCK ABSORBERS

7929 Lincoln Ave. Riverside, CA 92504 Phone: 951.689.ICON Fax: 951.689.1016
www.iconvehicledynamics.com



FOLLOW US ON FACEBOOK!

